

# Dimension Handbook

SX-type

Size 44" (1100mm) ~ 60" (1500mm)

## CONTENTS

### Pipes

Table 1 SX-Pipes(Size 44"~60") .....	1·2
--------------------------------------	-----

### Fittings

Table 2 SX-Fittings(Size 44"~ 60") .....	3
Table 3 Dimensions of Flanges(ASME B16.1 Class125) (Size 6"~ 60") .....	4
Table 4 SX-Double Socket Tees(Size 44"~ 60") .....	5
Table 5 SX-Socket Spigot Reducers(Size 44"~ 60") .....	6
Table 6 SX-Spigot Socket Reducers(Size 44"~ 60") .....	7
Table 7 SX-Socket Spigot Bends 90°(Size 44"~ 60") .....	8
Table 8 SX-Socket Spigot Bends 45°(Size 44"~ 60") .....	9
Table 9 SX-Socket Spigot Bends 22 1/2°(Size 44"~ 60") .....	10
Table 10 SX-Socket Spigot Bends 11 1/4°(Size 44"~ 60") .....	11
Table 11 SX-Socket Spigot Bends 5 5/8°(Size 44"~ 60") .....	12
Table 12 SX-Double Socket Bends 90°(Size 44"~ 60") .....	13
Table 13 SX-Double Socket Bends 45°(Size 44"~ 60") .....	14
Table 14 SX-Double Socket Bends 22 1/2°(Size 44"~ 60") .....	15
Table 15 SX-Double Socket Bends 11 1/4°(Size 44"~ 60") .....	16
Table 16 SX-Double Socket Bends 5 5/8°(Size 44"~ 60") .....	17
Table 17 SX-Socket Flanged Tees with Flanged Branch(Size 44"~ 60") .....	18
(For use in Gate Valve Chamber)	
Table 18 SX-Flanged Spigot Tees with Flanged Branch(Size 44"~ 60") .....	19
(For use in Gate Valve Chamber)	
Table 19 SX-Socket Spigot Tees with Flanged Branch(Size 44"~ 60") .....	20
(For Air Valves, Hydrants and Manholes)	
Table 20 SX-Double Socket Level Invert Tees(Size 44"~ 60") .....	21
with Socket Branch	
Table 21 SX-Socket Spigot Tees with Boss Flange(Size 44"~ 60") .....	22
Table 22 SX-Socket Spigot Tees with Double Boss Flange(Size 44"~ 60") .....	23
Table 23 SX-Collars(Size 44"~ 60") .....	24
Table 24 SX-Long Collars(Size 44"~ 60") .....	25
Table 25 SX-Flanged Socket(Size 44"~ 60") .....	26
Table 26 SX-Flanged Spigot(Size 44"~ 60") .....	27
Table 27 SX-Flanged Spigot for Collar(Size 44"~ 60") .....	28

### Accessories

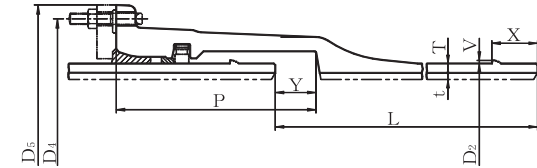
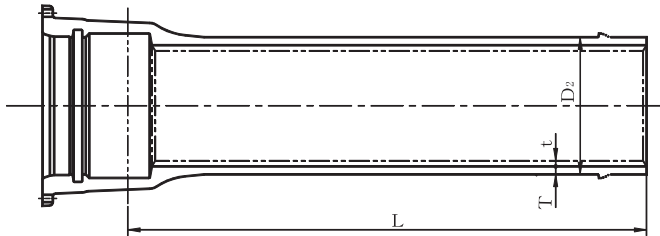
Table 28 SX-Accessories(1)Gland(Size 44"~ 60") .....	29
Table 29 SX-Accessories(2)Lock Ring(Size 44"~ 60") .....	30
Table 30 SX-Accessories(3)Liner (Size 44"~ 60") .....	31
Table 31 SX-Accessories(4)Spigot Ring for Cut Pipe(Size 44"~ 60") .....	32
Table 32 SX-Accessories(5)T-head Bolt and Nut(Size 44"~ 60").....	33
Table 33 SX-Accessories(6)Rubber Gasket (Size 44"~ 60") .....	34
Table 34 SX-Accessories(7)Backup Ring(Size 44"~ 60") .....	35
Table 35 SX-Accessories(8)Lock Ring Supporter(Size 44"~ 60") .....	36

Table 1 SX-

Pipes 

Size 44" ~ 60"

SX



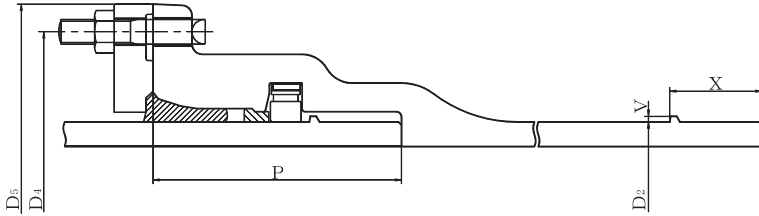
Size (inches)	Wall Thickness (inches)			Outside Diameter (inches)	Dimensions (inches)						
	T				D2	D4	D5	P	V	X	Y
	D1	D2	D3								
44	0.71	0.62	0.56	45.04	51.74	53.86	14.95	0.18	3.15	3.15	
48	0.77	0.67	0.60	49.06	55.83	57.96	14.91	0.20	3.15	3.15	
54	0.85	0.73	0.65	55.12	62.05	64.18	15.46	0.22	3.55	3.15	
60	0.93	0.81	0.71	61.19	68.43	70.56	15.81	0.24	3.55	3.15	

No. of Bolt	Nominal Laying Length (feet)	Mass (lb)					Lining		Size (inches)
		Socket projection	Spigot projection	Pipe Per 1 piece			Thick- ness (inches)	Mass (lb) Per 1 piece	
				D1	D2	D3			
12	19.69	1197	1.64	7143	6327	5842	0.40	1080	44
14	19.69	1345	2.03	7694	7474	6768	0.40	1177	48
14	19.69	1638	2.56	10340	9127	9127	0.48	1587	54
16	19.69	1971	3.18	12522	12522	10075	0.48	1766	60


Note: Spigot projections will be welded or casted by suitable method.

Table 2 SX-Fittings 

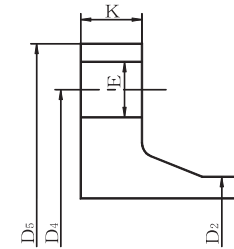
Size 44" ~ 60"



Size (inches)	Outside Diameter (inches)	Dimensions (inches)					No. of Bolt	Mass (lb)		Size (inches)
		D2	D4	D5	P	V		X	Socket projection	
44	45.04	51.73	53.86	9.15	0.18	3.15	12	736	2.16	44
48	49.06	55.83	57.95	9.15	0.20	3.15	14	827	2.60	48
54	55.12	62.05	64.17	9.55	0.22	3.54	14	1003	3.15	54
60	61.18	68.43	70.55	9.74	0.24	3.54	16	1213	3.75	60

Table 3 Dimensions of Flanges   
(ASME B16.1 Class125)

Size 6" ~ 60"

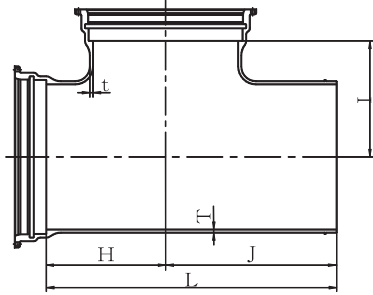


Size (inches)	Outside Diameter (inches)	Dimensions (inches)				No. of Bolt	Mass (lb)	Size (inches)
		D2	D4	D5	K			
6	6.65	9.50	11.00	1.00	0.91	8	15	6
8	8.66	11.75	13.50	1.13	0.91	8	25	8
12	12.71	17.00	19.00	1.25	1.00	12	53	12
24	24.83	29.50	32.00	1.87	1.38	20	160	24
44	45.04	51.75	55.25	2.63	1.63	40	568	44
48	49.06	56.00	59.50	2.75	1.63	44	659	48
54	55.12	62.75	66.25	3.00	2.01	44	842	54
60	61.18	69.25	73.00	3.13	2.01	52	1030	60

Table 4 SX-Double Socket Tees



Size 44"~ 60"

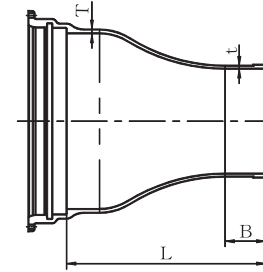


Size (inches)		Thickness (inches)		Dimensions (inches)				Mass (lb)
D	d	T	t	H	I	J	L	
44	12	0.83	0.63	25.59	28.74	39.37	64.96	2756
44	24	0.83	0.63	25.59	31.50	45.28	70.87	3109
44	44	0.83	0.83	35.83	35.04	51.18	87.01	4255
48	12	0.87	0.67	26.77	30.71	39.37	66.14	3175
48	24	0.87	0.67	26.77	33.86	45.28	72.05	3549
48	48	0.87	0.87	38.19	37.40	53.15	91.34	4982
54	12	0.94	0.75	27.56	33.46	39.37	66.93	3880
54	24	0.94	0.75	27.56	37.40	45.28	72.83	4321
54	54	0.94	0.94	42.52	41.34	57.09	99.61	6437
60	12	1.02	0.83	28.74	36.61	39.37	68.11	4718
60	24	1.02	0.83	28.74	41.34	45.28	74.02	5225
60	60	1.02	1.02	46.46	45.28	59.06	105.51	8047

Table 5 SX-Socket Spigot Reducers



Size 44"~ 60"

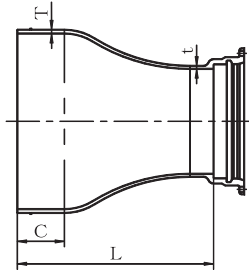


Size (inches)		Thickness (inches)		Dimensions (inches)		Mass (lb)
D	d	T	t	B	L	
44	32	0.83	0.71	9.45	48.03	1876
44	36	0.83	0.75	10.24	48.82	1984
48	32	0.87	0.71	9.45	48.43	2086
48	36	0.87	0.75	10.24	49.21	2185
48	44	0.87	0.83	16.54	55.51	2557
54	36	0.94	0.75	10.24	50.00	2601
54	44	0.94	0.83	16.54	56.30	2932
54	48	0.94	0.87	16.93	56.69	3086
60	40	1.02	0.83	10.24	50.79	3219
60	44	1.02	0.83	16.54	57.09	3417
60	48	1.02	0.87	16.93	57.48	3549
60	54	1.02	0.94	17.32	57.87	3814

Table 6 SX-Spigot Socket Reducers



Size 44" ~ 60"

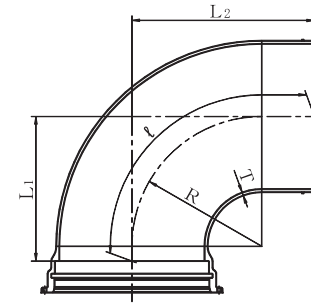


Size (inches)		Thickness (inches)		Dimensions (inches)		Mass (lb)
D	d	T	t	C	L	
44	32	0.83	0.71	16.54	53.54	1750
44	36	0.83	0.75	16.54	53.94	1916
48	32	0.87	0.71	16.93	53.94	1909
48	36	0.87	0.75	16.93	54.33	2068
48	44	0.87	0.83	16.93	55.51	2513
54	36	0.94	0.75	17.32	54.72	2359
54	44	0.94	0.83	17.32	55.91	2756
54	48	0.94	0.87	17.32	56.30	2954
60	40	1.02	0.83	17.72	55.91	2822
60	44	1.02	0.83	17.72	56.30	3086
60	48	1.02	0.87	17.72	56.69	3263
60	54	1.02	0.94	17.72	57.48	3660

Table 7 SX-Socket Spigot Bends 90°

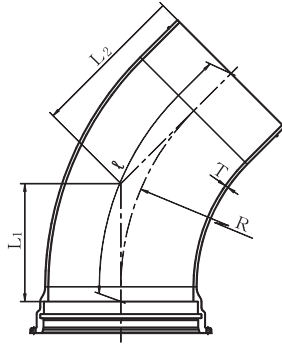


Size 44" ~ 60"



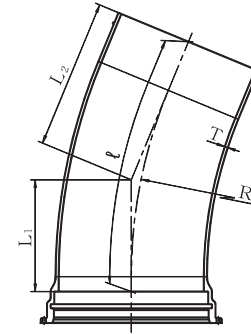
Size (inches)	Thickness (inches)	Dimensions (inches)			Length of Pipe center (inches)	Mass (lb)
		D	T	R		
44	0.83	47.24	51.46	63.90	95.08	3459
48	0.87	47.24	51.54	63.98	95.24	4057
54	0.94	47.24	51.73	64.45	95.91	4982
60	1.02	47.24	52.05	65.12	96.89	6063

Table 8 SX-Socket Spigot Bends 45°  
Size 44" ~ 60"



Size (inches)	Thickness (inches)	Dimensions (inches)			Length of Pipe center (inches)	Mass (lb)
		D	T	R		
44	0.83	90.55	41.73	54.17	92.01	3461
48	0.87	90.55	41.81	54.25	92.17	3946
54	0.94	90.55	42.01	54.72	92.83	4872
60	1.02	90.55	42.32	55.00	93.43	5886

Table 9 SX-Socket Spigot Bends 22 1/2°  
Size 44" ~ 60"

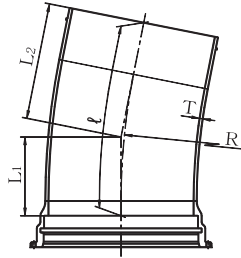


Size (inches)	Thickness (inches)	Dimensions (inches)			Length of Pipe center (inches)	Mass (lb)
		D	T	R		
44	0.83	177.17	39.45	51.89	90.43	3417
48	0.87	177.17	39.53	51.97	90.59	3902
54	0.94	177.17	39.76	52.44	91.30	4806
60	1.02	177.17	40.04	52.72	91.85	5798

Table 10 SX-Socket Spigot Bends 11 1/4°



Size 44" ~ 60"

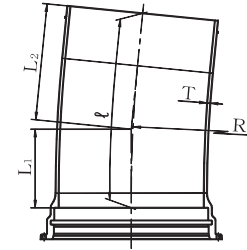


Size (inches)	Thickness (inches)	Dimensions (Inches)				Length of Pipe center (inches)	Mass (lb)
		D	T	R	phi		
44	0.83	236.22	27.48	39.92	67.24	2734	
48	0.87	236.22	27.56	40.00	67.40	3109	
54	0.94	236.22	27.76	40.47	68.07	3836	
60	1.02	236.22	28.07	40.75	68.66	4652	

Table 11 SX-Socket Spigot Bends 5 5/8°



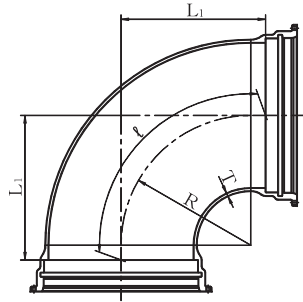
Size 44" ~ 60"



Size (inches)	Thickness (inches)	Dimensions (Inches)				Length of Pipe center (inches)	Mass (lb)
		D	T	R	phi		
44	0.83	472.44	27.44	39.88	67.28	2734	
48	0.87	472.44	27.52	39.96	67.44	3109	
54	0.94	472.44	27.72	40.43	68.11	3836	
60	1.02	472.44	28.03	40.71	68.70	4652	

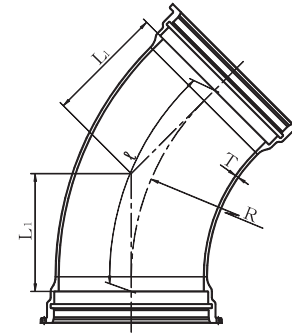


Table 12 SX-Double Socket Bends 90°  
Size 44"~ 60"



Size (inches)	Thickness (inches)	Dimensions (inches)			length of Pipe center (inches)	Mass (lb)
		D	T	R		
44	0.83	47.24	51.46	82.64	3924	
48	0.87	47.24	51.54	82.80	4453	
54	0.94	47.24	51.73	83.19	5467	
60	1.02	47.24	52.05	83.82	6614	

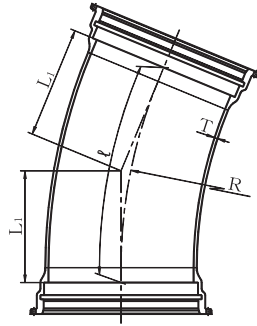
Table 13 SX-Double Socket Bends 45°  
Size 44"~ 60"



Size (inches)	Thickness (inches)	Dimensions (inches)			length of Pipe center (inches)	Mass (lb)
		D	T	R		
44	0.83	90.55	41.73	79.57	3836	
48	0.87	90.55	41.81	79.72	4343	
54	0.94	90.55	42.01	80.12	5335	
60	1.02	90.55	42.32	80.75	6460	

Table 14 SX-Double Socket Bends 22 1/2°

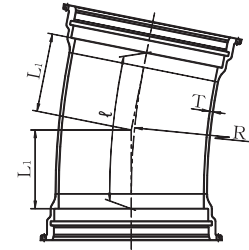
Size 44" ~ 60"



Size (inches)	Thickness (inches)	Dimensions (inches)			length of Pipe center (inches) $\phi$	Mass (lb)
		D	T	R		
44	0.83	177.17	39.45	77.99	3792	
48	0.87	177.17	39.53	78.15	4299	
54	0.94	177.17	39.76	78.62	5269	
60	1.02	177.17	40.04	79.17	6371	

Table 15 SX-Double Socket Bends 11 1/4°

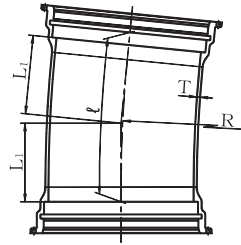
Size 44" ~ 60"



Size (inches)	Thickness (inches)	Dimensions (inches)			length of Pipe center (inches) $\phi$	Mass (lb)
		D	T	R		
44	0.83	236.22	27.48	54.80	3109	
48	0.87	236.22	27.56	54.96	3505	
54	0.94	236.22	27.76	55.35	4299	
60	1.02	236.22	28.07	55.98	5225	

Table 16 SX-Double Socket Bends 5 5/8°

Size 44" ~ 60"



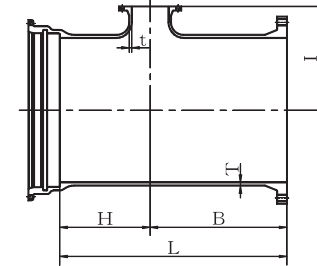
Size (inches)	Thickness (inches)	Dimensions (inches)			length of Pipe center (inches)	Mass (lb)
		D	T	R		
44	0.83	472.44	27.44	54.84	3109	
48	0.87	472.44	27.52	55.00	3527	
54	0.94	472.44	27.72	55.39	4299	
60	1.02	472.44	28.03	56.02	5225	

Table 17 SX-Socket Flanged Tees with Flanged Branch  
(For use in Gate Valve Chamber)

Size 44" ~ 60"



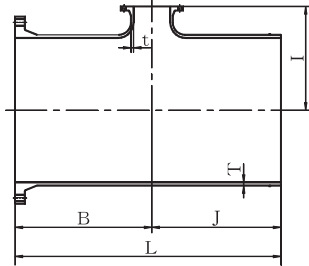
**SX**



Size (inches)		Thickness (inches)		Dimensions (inches)				Mass (lb)
D	d	T	t	B	H	I	L	
44	6	0.83	0.63	41.73	13.39	29.53	55.12	2976
44	8	0.83	0.63	41.73	13.39	30.31	55.12	2998
44	12	0.83	0.63	41.73	25.59	31.10	67.32	3395
48	6	0.87	0.67	41.73	14.17	31.50	55.91	3417
48	8	0.87	0.67	41.73	14.17	32.28	55.91	3439
48	12	0.87	0.67	41.73	26.77	33.07	68.50	3902
54	6	0.94	0.75	41.73	14.96	34.25	56.69	4233
54	8	0.94	0.75	41.73	14.96	35.43	56.69	4255
54	12	0.94	0.75	41.73	27.56	36.22	69.29	4828
60	6	1.02	0.83	41.73	16.54	37.40	58.27	5181
60	8	1.02	0.83	41.73	16.54	38.58	58.27	5203
60	12	1.02	0.83	41.73	28.74	39.76	70.47	5864

Table 18 SX-Flanged Spigot Tees with Flanged Branch  
(For use in Gate Valve Chamber)

Size 44" ~ 60"



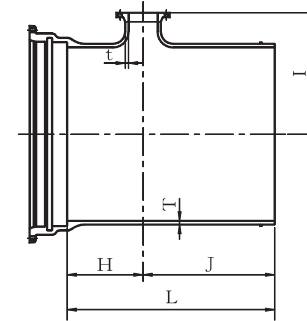
Size (inches)		Thickness (inches)		Dimensions (inches)				Mass (lb)
D	d	T	t	B	J	I	L	
44	6	0.83	0.63	41.73	31.10	29.53	72.83	2756
44	8	0.83	0.63	41.73	33.07	30.31	74.80	2844
44	12	0.83	0.63	41.73	39.37	31.10	81.10	3064
48	6	0.87	0.67	41.73	31.10	31.50	72.83	3153
48	8	0.87	0.67	41.73	33.07	32.28	74.80	3241
48	12	0.87	0.67	41.73	39.37	33.07	81.10	3505
54	6	0.94	0.75	41.73	31.50	34.25	73.23	3924
54	8	0.94	0.75	41.73	33.46	35.43	75.20	4012
54	12	0.94	0.75	41.73	39.37	36.22	81.10	4299
60	6	1.02	0.83	41.73	31.89	37.40	73.62	4740
60	8	1.02	0.83	41.73	33.86	38.58	75.59	4872
60	12	1.02	0.83	41.73	39.37	39.76	81.10	5181

Table 19 SX-Socket Spigot Tees with Flanged Branch  
(For Air Valves, Hydrants and Manholes)

Size 44" ~ 60"

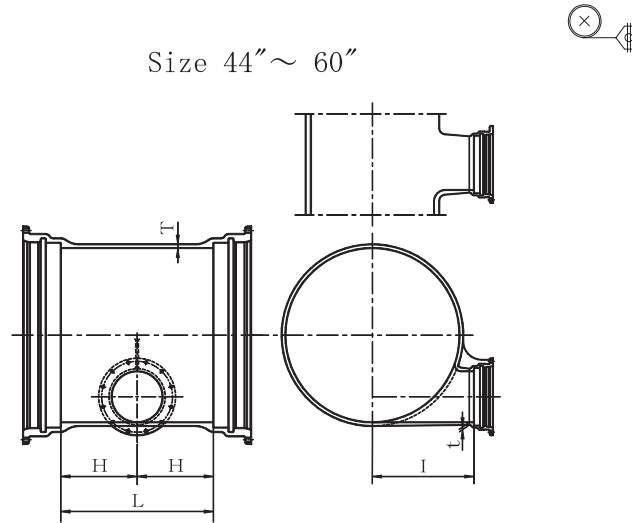


**SX**



Size (inches)		Thickness (inches)		Dimensions (inches)				Mass (lb)
D	d	T	t	H	I	J	L	
44	6	0.83	0.63	13.39	29.53	31.10	44.49	2090
44	8	0.83	0.63	13.39	30.31	33.07	46.46	2165
44	12	0.83	0.63	25.59	31.10	39.37	64.96	2756
44	24	0.83	0.63	25.59	43.31	44.88	70.47	3175
48	6	0.87	0.67	14.17	31.50	31.50	45.67	2403
48	8	0.87	0.67	14.17	32.28	33.07	47.24	2469
48	12	0.87	0.67	26.77	33.07	39.37	66.14	3153
48	24	0.87	0.67	26.77	45.28	44.88	71.65	3616
54	6	0.94	0.75	14.96	34.25	31.50	46.46	2976
54	8	0.94	0.75	14.96	35.43	33.46	48.43	3064
54	12	0.94	0.75	27.56	36.22	39.37	66.93	3880
54	24	0.94	0.75	27.56	48.62	45.28	72.83	4409
60	6	1.02	0.83	16.54	37.40	31.89	48.43	3682
60	8	1.02	0.83	16.54	38.58	33.86	50.39	3792
60	12	1.02	0.83	28.74	39.76	39.37	68.11	4718
60	24	1.02	0.83	28.74	51.97	45.67	74.41	5335

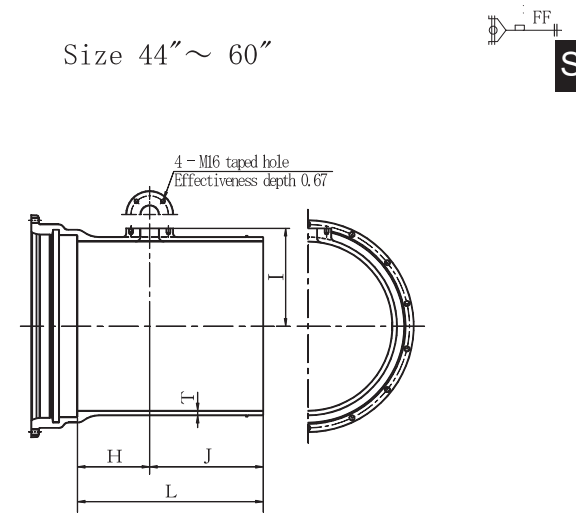
Table 20 SX-Double Socket Level Invert Tees with Socket Branch



Size (inches)		Thickness (inches)		Dimensions (inches)			Mass (lb)
D	d	T	t	H	I	L	
44	16	0.83	0.67	17.72	25.59	35.43	2668
48	16	0.87	0.71	18.50	27.56	37.01	3064
54	16	0.94	0.79	19.29	30.71	38.58	3792
60	16	1.02	0.87	20.08	33.46	40.16	4630

Note. d:GX-type joint

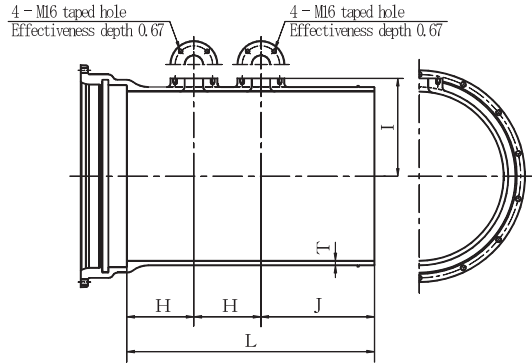
Table 21 SX-Socket Spigot Tees with Boss Flange



Size (inches)		Thickness (inches)		Dimensions (inches)				Mass (lb)
D	d	T	H	I	J	L		
44	3	0.83	11.02	23.82	32.68	43.70	2046	
48	3	0.87	11.02	25.79	32.68	43.70	2315	
54	3	0.94	14.96	28.94	28.74	43.70	2844	
60	3	1.02	11.02	31.89	36.61	47.64	3616	

Table 22 SX-Socket Spigot Tees with Double Boss Flange

Size 44" ~ 60"

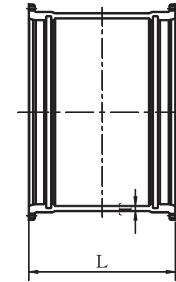


Size (inches)		Thickness (inches)		Dimensions (inches)				Mass (lb)
D	d	T	H	I	J	L		
44	3	0.83	11.02	23.82	21.65	43.70	2059	
48	3	0.87	11.02	25.79	21.65	43.70	2337	
54	3	0.94	11.02	28.94	21.56	43.70	2844	
60	3	1.02	11.02	31.89	25.59	47.64	3616	

Table 23 SX-Collars



Size 44" ~ 60"

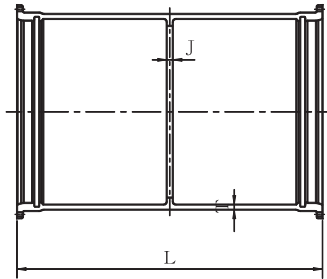


Size (inches)	Thickness (inches)	Dimensions (inches)	Mass (lb)
D	T	L	
44	1.18	35.43	2119
48	1.22	35.43	2359
54	1.30	37.40	2910
60	1.38	37.40	3439

Table 24 SX-Long Collars



Size 44" ~ 60"

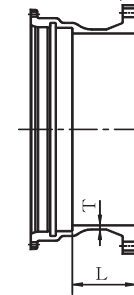


Size (inches)	Thickness (inches)		Dimensions (inches)		Mass (lb)
	D	T	J	L	
44	1.18	1.57	78.74	4211	
48	1.22	1.57	78.74	4740	
54	1.30	1.57	78.74	5578	
60	1.38	1.57	78.74	6570	

Table 25 SX-Flanged Socket



Size 44" ~ 60"

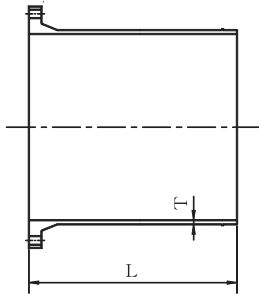


Size (inches)	Thickness (inches)		Dimensions (inches)	Mass (lb)
	D	T		
44	0.83	15.75	1773	
48	0.87	15.75	2019	
54	0.94	14.57	2447	
60	1.02	14.57	2976	

Table 26 SX-Flanged Spigot



Size 44" ~ 60"

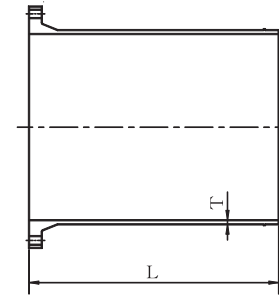


Size (inches)	Thickness (inches)	Dimensions (inches)	Mass (lb)
D	T	L	
44	0.83	37.40	1680
48	0.87	37.40	1929
54	0.94	37.40	2403
60	1.02	37.40	2910

Table 27 SX-Flanged Spigot for Collar



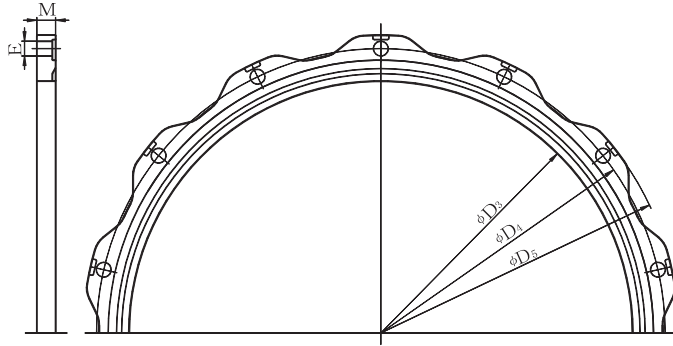
Size 44" ~ 60"



Size (inches)	Thickness (inches)	Dimensions (inches)	Mass (lb)
D	T	L	
44	0.83	59.06	2315
48	0.87	59.06	2668
54	0.94	59.06	3307
60	1.02	59.06	3990

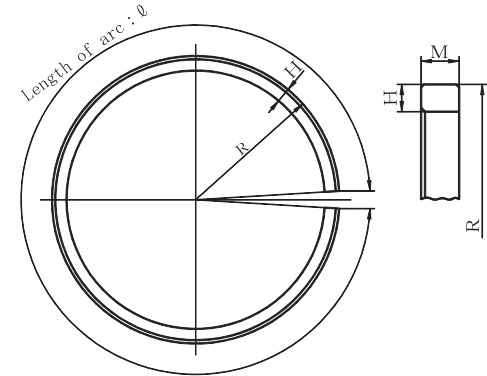


Table 28 SX-Accessories(1)Gland  
Size 44"~ 60"



Size (inches)	Dimensions (inches)					No. of Bolt	Mass (lb)
	D <sub>3</sub>	D <sub>4</sub>	D <sub>5</sub>	E	M		
44	45.71	51.74	53.86	1.06	1.34	12	159.18
48	49.77	55.83	57.96	1.06	1.42	14	189.16
54	55.87	62.03	64.18	1.06	1.50	14	229.29
60	61.97	68.43	70.56	1.06	1.58	16	279.99

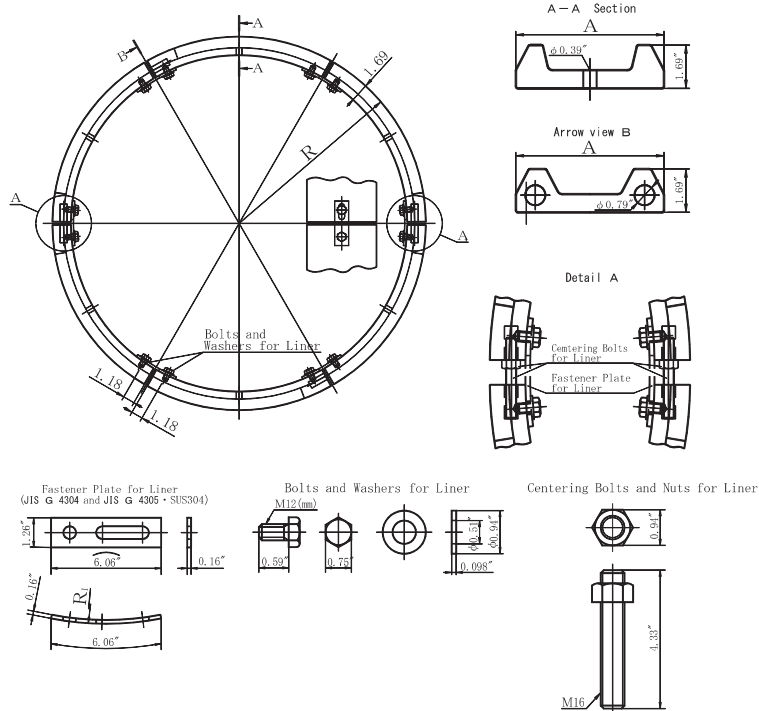
Table 29 SX-Accessories(2)Lock Ring  
Size 44"~ 60"



Size (inches)	Dimensions (inches)				Mass (lb)
	H	M	R	$\varnothing$	
44	0.79	1.19	23.23	143.98	33.96
48	0.79	1.19	25.24	156.62	37.04
54	0.79	1.19	28.27	175.63	41.45
60	0.87	1.38	31.34	194.93	59.31

Table 30 SX-Accessories(3)Liner

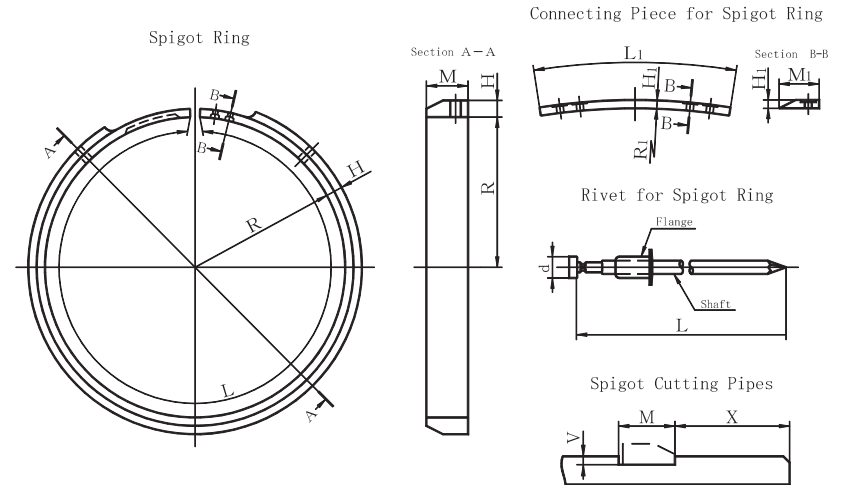
Size 44"~ 60"



Size (inches)	Liner			Fastener Plate for Liner		Bolts and Washers for Liner		Centering Bolts and Nuts for Liner	
	Dimensions (inches)		No. of Iset Mass (lb)	R <sub>1</sub> (inches)	No.	No. of Bolts	No. of Bolts		
	A	R							
44	5.67	23.43	195.33	21.78	6	12	4		
48	5.63	25.44	211.65	23.78	6	12	4		
54	5.79	28.47	242.51	26.78	6	12	4		
60	-	-	-	-	-	-	-		

Table 31 SX-Accessories(4)Spigot Ring for Cut Pipe

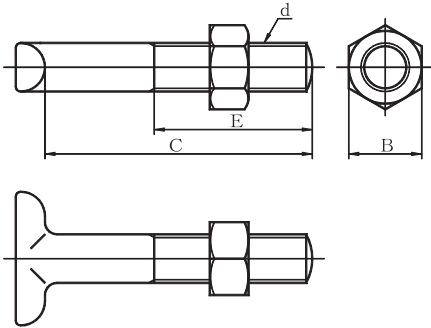
Size 44"~ 60"



Size (inches)	Spigot Ring				Connecting Piece				No. of Iset Mass (lb)	Rivet		Spigot Cutting Pipes		
	Dimensions (inches)				Dimensions (inches)					Dimensions (inches)		Dimensions (inches)		
	R	H	M	L	R <sub>1</sub>	H <sub>1</sub>	M <sub>1</sub>	L <sub>1</sub>		d	L	M	V	X
44	22.21	0.38	1.19	139.34	22.56	0.14	1.15	4.49	0.27	0.16	1.58	1.26	0.20	1.97
48	24.22	0.40	1.19	151.93	24.57	0.16	1.15	4.49	0.31	0.16	1.58	1.26	0.20	1.97
54	27.25	0.42	1.19	170.99	27.60	0.18	1.15	4.49	0.36	0.16	1.58	1.26	0.20	2.37
60	30.24	0.48	1.38	189.77	30.63	0.20	1.34	4.49	0.54	0.16	1.70	1.46	0.24	2.17

Table 32 SX-Accessories(5)T-head Bolt and Nut

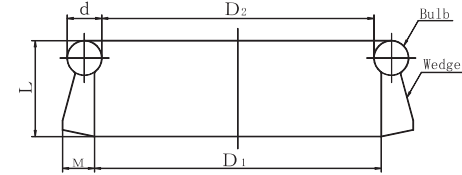
Size 44"~ 60"



Size (inches)	Dimensions (inches)				No.
	d	B	C	E	
44	M24	1.42	6.30	3.94	12
48	M24	1.42	6.30	3.94	14
54	M24	1.42	6.30	3.94	14
60	M24	1.42	6.30	3.94	16

Table 33 SX-Accessories(6)Rubber Gasket

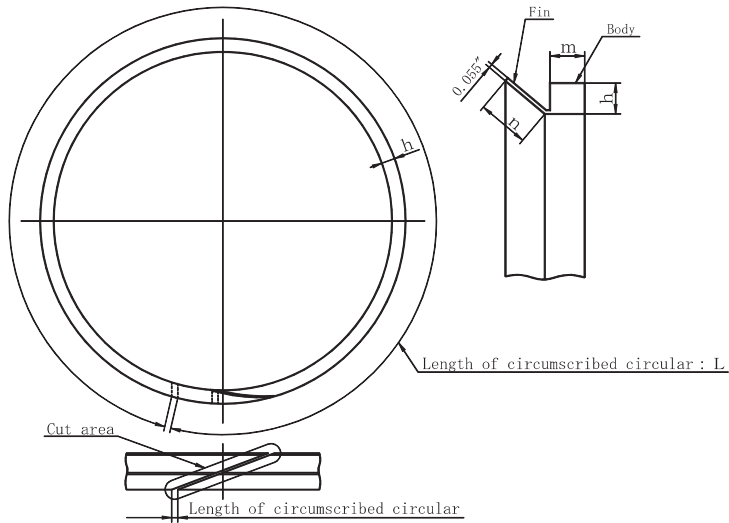
Size 44"~ 60"



Size (inches)	Dimensions (inches)				
	D <sub>1</sub>	D <sub>2</sub>	d	L	M
44	44.06	43.63	1.03	2.84	0.95
48	48.04	47.60	1.03	2.84	0.95
54	53.94	53.51	1.03	2.84	0.95
60	59.85	59.41	1.03	2.84	0.95

Table 34 SX-Accessories(7)Backup Ring

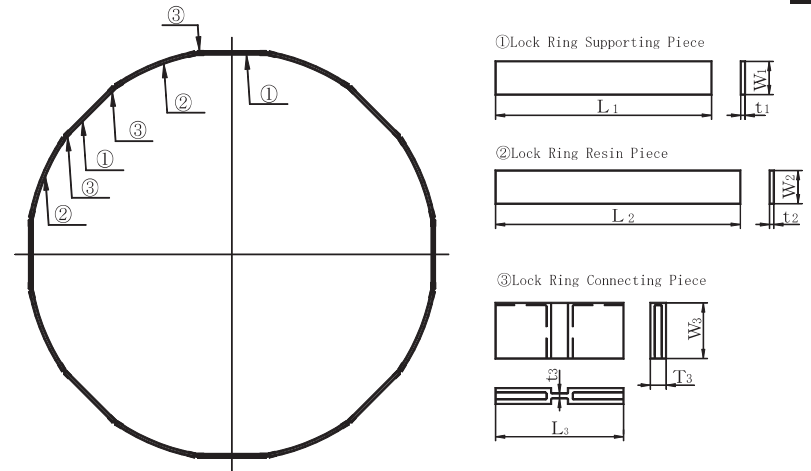
Size 44"~ 60"



Size (inches)	Dimensions (inches)			
	L	h	m	n
44	143.51	0.32	0.36	0.54
48	156.11	0.32	0.36	0.54
54	175.16	0.32	0.36	0.54
60	194.22	0.32	0.36	0.54

Table 35 SX-Accessories(8)Lock Ring Supporter

Size 44"~ 60"



Size (inches)	①Lock Ring Supporting Piece				②Lock Ring Resin Piece				③Lock Ring Connecting Piece				
	Dimensions (inches)			No. of Isset	Dimensions (inches)			No. of Isset	Dimensions (inches)				No. of Isset
	t <sub>1</sub>	L <sub>1</sub>	W <sub>1</sub>		t <sub>2</sub>	L <sub>2</sub>	W <sub>2</sub>		T <sub>3</sub>	t <sub>3</sub>	L <sub>3</sub>	W <sub>3</sub>	
44	0.2	11.54	0.95	6	0.2	12.01	0.95	6	0.3	0.08	3.55	1.11	12
48	0.2	11.97	0.95	6	0.2	13.67	0.95	6	0.3	0.08	3.55	1.11	12
54	0.2	12.72	0.95	6	0.2	16.11	0.95	6	0.3	0.08	3.55	1.11	12
60	0.2	13.51	1.15	6	0.2	18.59	1.15	6	0.3	0.08	3.55	1.30	12