

AFTER SALES SERVICE FOR PUMPS

KUBOTA Corporation

KUBOTA Corporation

■ <http://www.kubota-global.net/>

Tokyo Office

1-3, Kyobashi 2-chome, Chuo-ku, Tokyo, Japan Phone : +81-3-3245-3444 Facsimile : +81-3-3245-3454

KUBOTA CORPORATION DUBAI OFFICE

Office No. LB180508 & 180509, JAFZA VIEW 18, Jebel Ali Free Zone,
P.O.Box17440, Dubai, UNITED ARAB EMIRATES
Phone : +971-4-8857033 Facsimile : +971-4-8857032

KUBOTA CORPORATION MALAYSIA BRANCH OFFICE

801A, Amcorp Tower, Amcorp Trade Centre, No.18,
Jalan Persiaran Barat 46050 Petaling Jaya, Selangor, MALAYSIA
Phone : +60-3-7954-2334 Facsimile : +60-3-7954-1335

KUBOTA KASUI THAILAND CO., LTD.

719, 19th Floor KPN Tower Building, Rama 9 Road, Bangkok,
Huay-Kwang, Bangkok 10320, Thailand
Phone : +66-2717-0815 Facsimile : +66-2717-0816

KUBOTA KASUI PHILIPPINES CORPORATION

Suite 302, 3rd Floor Golden Rock Building, No.168 Salcedo St.,
Legaspi Village, Makati City, Philippines 1229
Phone : +63-2-957-2379 Facsimile : +63-2-856-5519

KUBOTA KASUI VIETNAM CO., LTD.

No.3, Street 20, Song Than Industrial Zone II, Di An Dist.,
Binh Duong Province, VIETNAM
Phone : +84-6503-790521 Facsimile : +84-6503-790526

KUBOTA SANLIAN PUMP(ANHUI)CO., LTD.

<http://www.kubota-sanlian.cn>
He Xian County Economic Development Zone in Anhui Province, 238
Phone : +86-555-5338018



SOLUTIONS BY KUBOTA

KUBOTA will make each customers' maintenance plan based on your policy, budget and priority to be most suitable to meet your requirement.

Basic Policy	Solutions by KUBOTA
<p>Safekeeping Type</p> <p>Recommend to keep enough stock of parts all the time, so that in case of emergency, plant can be recovered within minimum stoppage.</p>	<p>Do you know parts are also degrading with age? KUBOTA will guide you safekeeping method, propose minimum parts to stock and announce you when those parts should be replaced.</p>
<p>Plan Purchase Type</p> <p>Having periodical maintenance plan, and wants to purchase parts to be ready to replace at that maintenance schedule.</p>	<p>Before making your maintenance plan, please contact KUBOTA. KUBOTA will check your pump and propose the most suitable pump maintenance plan.</p>
<p>Cost Oriented Type</p> <p>Budget is limited and pump is not used at core part of the plant, so ordering the parts after breakdown.</p>	<p>When there is any problem with the pump, please contact the nearest KUBOTA service network. KUBOTA service network can repair your KUBOTA pumps in most safe and quick way.</p>

HIGHLY TRAINED SERVICE NETWORK

KUBOTA service network companies are trained not only at KUBOTA Hirakata plant but also at each pump station and get high skills which offers the best service to customers.

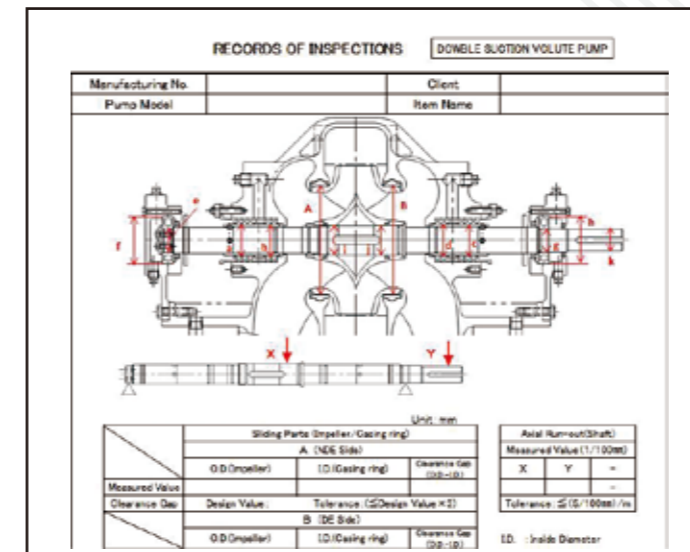


INSPECTION AND DIAGNOSIS

KUBOTA have wide and long-years-experience technology. Inspection / Diagnosis result can be submitted in a report with the best solution for the most suitable maintenance.

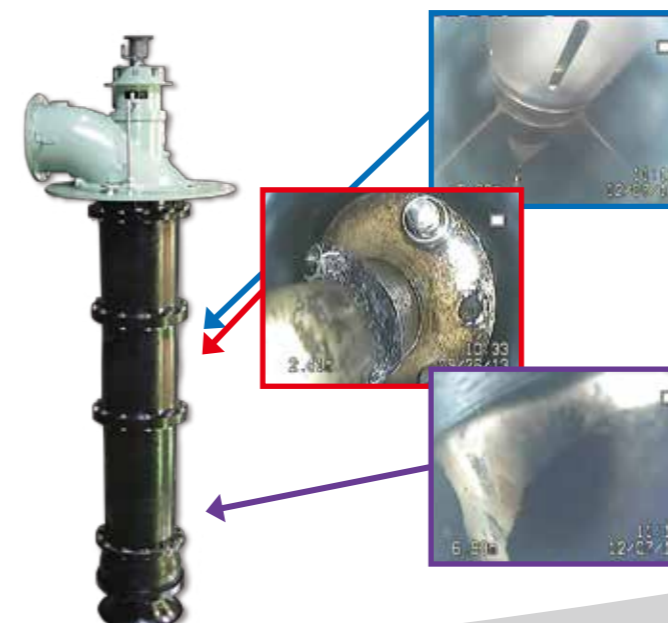
Comparison with Factory Test Data

Using a check sheet, we will record the actual data of the pump. Problems can be identified by comparing the data with factory test data.



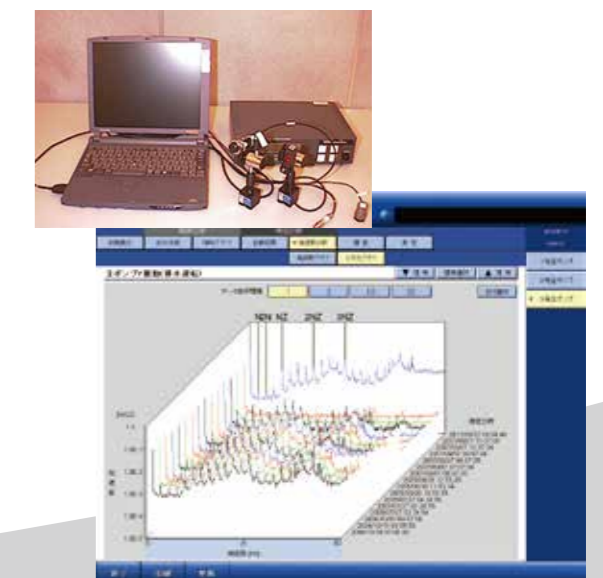
Borescope Inspection

During pump stopping time parts inside the pump can be visually checked by using Borescope. Time & cost can be minimized because pump dismantling is not required.



Diagnostic System

Analysis can be executed only with portable diagnostic system. By analyzing the frequency of pump under operation, pump defects can be checked more easily than conventional method.

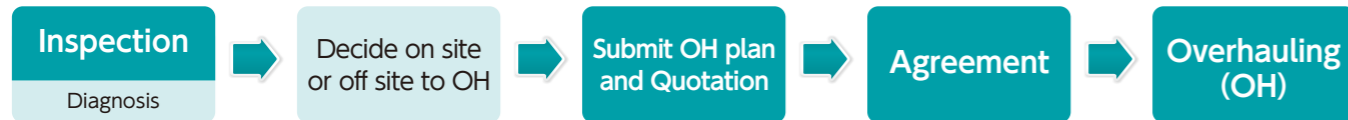


OVERHAUL

Schedule and Flow of Overhauling

To avoid unnecessary replacement and/or mishandling during dismantling at site, please contact KUBOTA before starting overhauling work.

We will make the most suitable overhauling plan for you, and send our highly trained engineers for technical advise.



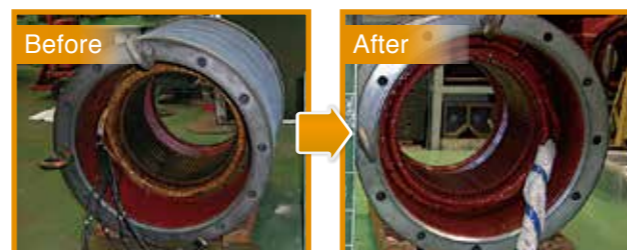
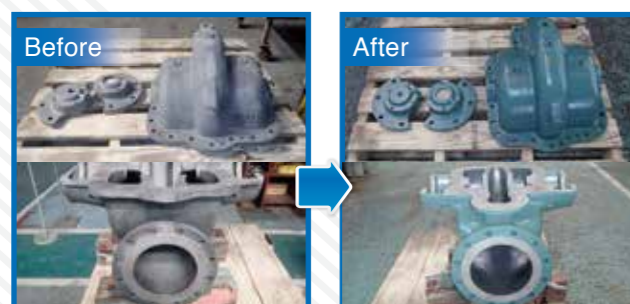
Overhauling at Site

Parts can be replaced at each pumping station instead of sending back the pump to our factory to reduce time & cost. In order to revive pump performance, genuine spare parts are essential. We will supply the parts for your pump, exactly same as the original design.



Overhauling at Factory

If you can send back your KUBOTA Pump to our factory, your pump can be overhauled completely and performance will recover most.



REPLACEMENT AND RETROFIT

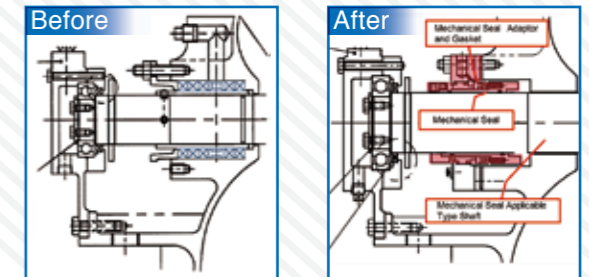
Replacing Complete Pump & Motor

Replacing pump and/or motor to newly developed high efficiency type will lead your plants' energy and cost saving.



Changing Sealing Type

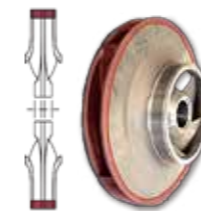
To save maintenance time & cost, one option is to change from Gland Packing to Mechanical Seal.



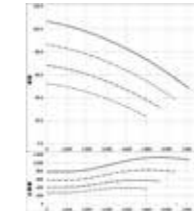
Adjusting to New Operation Point

If Capacity or Head is changed from the installation time, then we can propose the most suitable modification plan from various methods.

Impeller trimming



VVVF motor



Changing Material / Coating

To resist corrosion & wear, changing material and/or coating is very effective. By new internal coating, performance improvement can also be expected.

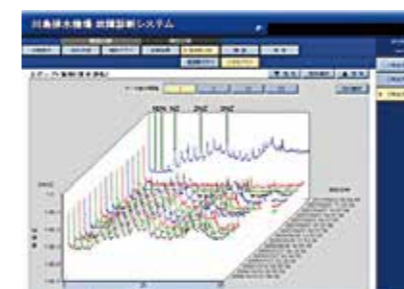
Coating



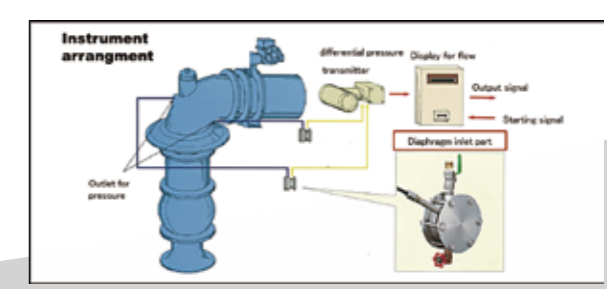
Condition Monitoring Tool

If pump has a diagnostic system and flowmeter, you can make more precise trend control and state watching, and can minimize maintenance cost and man-power.

Diagnostic system (permanence)



Bend flowmeter



KUBOTA SERVICE NETWORK

KUBOTA has service companies appointed to all of our supplied pumps.
 KUBOTA service network will support every customers, and support your maintenance team.



PUMP BUSINESS BASES	
Company	KUBOTA TOKYO OFFICE
Location	Tokyo, Japan
TEL	+81-3-3245-3444
URL	http://www.kubota-global.net/products/pumps/
Company	KUBOTA HIRAKATA PLANT
Location	Osaka, Japan
TEL	+81-72-890-2757
URL	http://www.kubota-global.net/products/pumps/
Company	KUBOTA KIKO CO.,LTD
Location	Osaka, Japan
TEL	+81-72-840-5727
URL	http://www.kubota-kikou.co.jp/
Company	KUBOTA SANLIAN PUMP (ANHUI) CO.,LTD
Location	Anhui, China
TEL	+86-555-5338018
URL	http://www.kubota-sanlian.cn/
Company	KUBOTA MALAYSIA BRANCH OFFICE
Location	Kuala Lumpur, Malaysia
TEL	+60-3-7954-2334
URL	-
Company	KUBOTA DUBAI OFFICE
Location	Dubai, UAE
TEL	+971-4-8857033
URL	-

FOR YOUR PUMP STATION	
Company	
Location	
TEL	
E-mail	
URL	

GROUP COMPANIES	
Company	KUBOTA KASUI THAILAND CO., LTD.
Location	Bangkok, Thailand
TEL	+66-2717-0815
Company	KUBOTA KASUI CORPORATION (TAIWAN)
Location	Taipei, Taiwan
TEL	+886-2-2595-3385
Company	KUBOTA KASUI VIETNAM CO., LTD.
Location	Binh Duong, Vietnam
TEL	+84-6503-790521
Company	KUBOTA KASUI PHILIPPINES CORPORATION
Location	Makati City, Philippines
TEL	+63-2-957-2379
Company	KUBOTA SAUDI ARABIA COMPANY,LLC
Location	Dammam, Kingdom of Saudi Arabia
TEL	+966-13-8327209

CONTACT US

In order to keep pump in healthy condition and/or to revive pump performance, genuine parts from OEM is essential. Let us propose the parts to replace, and confirm the quality with your own eyes!

Also we can dispatch our excellent technical advisors for inspection, site work advising and any trouble shooting that you may require.

Below is minimum information that we need to study about your installed pump and/or to make quotation for its parts.

Please contact us with these information ready.

Contact us	
Please fill out form below and submit for your inquiry	
Company Name	
Person in charge	
E-mail	
Phone No.	
Inquiry No	
Pump Manufacturing No.	
Parts Name / Parts No.	
Construction Drawing (Please highlight the required spare parts with color, if possible.)	



VERTICAL MIXED FLOW VOLUTE PUMP			
SERVICE	T W PUMP		
ITEM NO.	G-5411		
MODEL	DS-VV		
BORE	1000 × 900	mm	
HEAD	m	SPEED	1480 rpm
CAPACITY	m ³ /h	POWER	260 kW
DES.PRESS	kgf/cm ²	DES. TEMP.	66.2 °C
MFG. NO.	123456789	DATE	1973.2.4
KUBOTA Corporation			

Pump Manufacturing No.