

Dimension Handbook

NS-type

Size 20" (500mm) ~ 40" (1000mm)

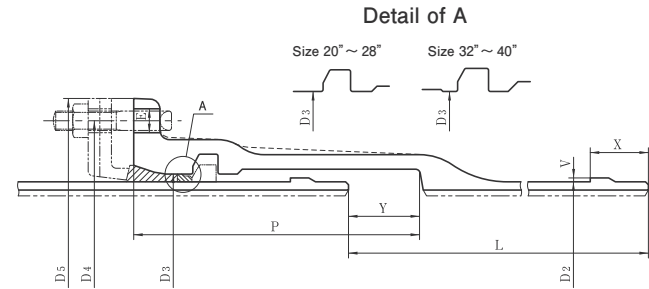
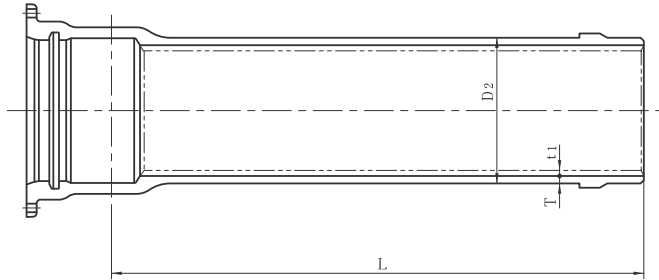
CONTENTS

Pipes		
Table 1 NS-Pipes (Size 20" ~ 40")	1	
Table 1 NS-Pipes (Size 20" ~ 40")	2	
Fittings		
Table 2 NS-Fittings (Size 12" ~ 16") for Tees and Reducers	3	
Table 2 NS-Fittings (Size 20" ~ 40")	4	
Table 3 NS-Triple Socket Crosses (Size 20" ~ 36")	5	
Table 4 NS-Duble Socket Tees (Size 20" ~ 40")	6	
Table 5 NS-Socket Spigot Reducers (Size 20" ~ 40")	7	
Table 6 NS-Spigot Socket Reducers (Size 20" ~ 40")	8	
Table 7 NS-Socket Spigot Bends 90° (Size 20" ~ 40")	9	
Table 8 NS-Socket Spigot Bends 45° (Size 20" ~ 40")	10	
Table 9 NS-Socket Spigot Bends 22 1/2° (Size 20" ~ 40")	11	
Table 10 NS-Socket Spigot Bends 11 1/4° (Size 20" ~ 40")	12	
Table 11 NS-Socket Spigot Bends 5 5/8° (Size 20" ~ 40")	13	
Table 12 NS-Double Socket Bends 45° (Size 20" ~ 40")	14	
Table 13 NS-Double Socket Bends 22 1/2° (Size 20" ~ 40")	15	
Table 14 NS-Socket Flanged Tees with Flanged Branch (Size 20" ~ 40")		
(For use in Gate Valve Chamber)	16	
Table 15 NS-Flanged Spigot Tees with Flanged Branch (Size 20" ~ 40")		
(For use in Gate Valve Chamber)	17	
Table 16 NS-Socket Spigot Tees with Flanged Branch (Size 20" ~ 40")		
(For Air Valves, Fire Hydrants and Manholes)	18	
Table 17 NS-Double Socket Level Invert Tees with Socket Branch (Size 20" ~ 40")	19	
Table 18 NS-Collars (Size 20" ~ 40")	20	
Table 19 NS-Flanged Socket (Size 20" ~ 40")	21	
Table 20 NS-Flanged Spigot (Size 20" ~ 40")	22	
Table 21 NS-Plugs (Size 20" ~ 40")	23	
Accessories		
Table 22 NS-Jointing Accessories (1) Gland for Fittings (Size 12" ~ 16")	25	
Table 22 NS-Jointing Accessories (1) Gland for Pipes and Fittings (Size 20" ~ 40")	26	
Table 23 NS-Jointing Accessories (2) Lock Ring (Size 12" ~ 16")	27	
Table 23 NS-Jointing Accessories (2) Lock Ring (Size 20" ~ 40")	28	
Table 24 NS-Jointing Accessories (3) Liner (Size 12" ~ 16")	29	
Table 24 NS-Jointing Accessories (3) Liner (Size 20" ~ 40")	30	
Table 25 NS-Jointing Accessories (4) Spigot Ring for Cut Pipe Rivet Type (Size 12" ~ 16")	32	
Table 25 NS-Jointing Accessories (4) Spigot Ring for Cut Pipe Rivet Type (Size 20" ~ 40")	34	
Table 26 NS-Jointing Accessories (5) T-head Bolts and Nuts	36	
Table 27 NS-Jointing Accessories (6) Rubber Gaskets (Size 12" ~ 16")	37	
Table 27 NS-Jointing Accessories (6) Rubber Gaskets (Size 20" ~ 40")	38	
Table 28 NS-Jointing Accessories (7) Lock Ring Centering Rubbers (Size 12" ~ 16")	39	
Table 29 NS-Jointing Accessories (8) Backup Rings (Size 12" ~ 16")	40	
Table 29 NS-Jointing Accessories (8) Backup Rings (Size 20" ~ 40")	41	

Table 1 NS-

Pipes
Size 20" ~ 40"

NS



Size (inches)	Thickness (inches)	Outside Diameter (inches)	Dimensions (inches)										
			D2	D3	D4	D5	E	P	V	X	Y		
D	T												
	DS												
20	0.33	20.79	21.42	25.75	27.56	0.91	11.61	0.16	2.36	2.95			
24	0.39	24.83	25.54	29.84	31.65	0.91	11.61	0.16	2.36	2.95			
28	0.43	28.86	29.65	34.49	36.61	1.06	13.07	0.24	3.15	2.95			
32	0.47	32.91	33.70	38.78	40.91	1.06	13.39	0.24	3.15	2.95			
36	0.51	36.97	37.76	43.23	45.83	1.30	13.39	0.24	3.15	2.95			
40	0.57	40.98	41.77	47.52	50.12	1.30	13.70	0.24	3.15	3.15			

Note : Pipe shape can be as the dashed line.

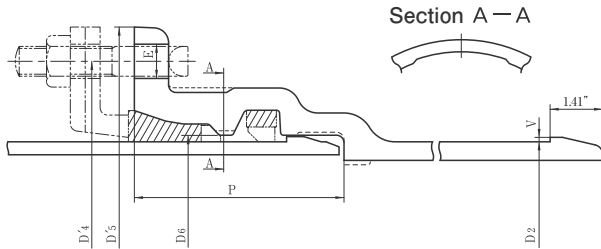
No. of Bolt	Nominal laying length (feet)	Mass (lb)				Lining (reference)			Size (inches)
		Socket	Spigot Projection	Iron		Thickness (inches)	Mass (lb)		
				Per foot of Straight portion	Per Piece		Per foot of Straight portion	Per Piece	
14	19.69	243	2.1	66.7	1541	0.24	15.3	298	20
14	19.69	291	2.5	93.7	2114	0.24	18.3	357	24
16	19.69	406	5.5	119.9	2734	0.31	28.4	553	28
20	19.69	509	6.3	149.3	3417	0.31	32.5	631	32
20	19.69	622	7.0	181.7	4167	0.31	36.5	710	36
20	19.69	741	14.2	224.9	5115	0.39	70.6	981	40

Note : Spigot projections will be welded or casted by suitable method.
In this case, pull-out resistance will be more than 17,000 Din lbf.
(Din : Nominal Diameters inches)

Table 2 NS- Fittings
Size 12" ~ 16"



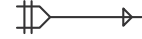
(For Tees and Reducers)



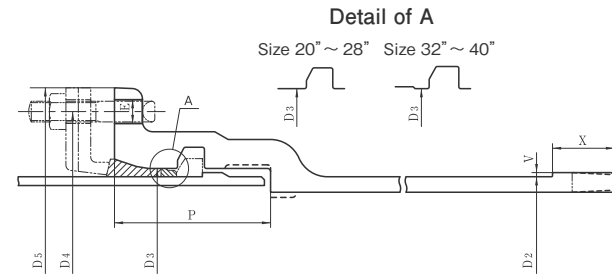
Size (inches)	Outside Diameter (inches)	Dimensions (inches)						No. of Bolt	Mass (lb)	
		D'4	D'5	D6	E	P	V		Socket	Spigot Projection
12	12.71	16.97	18.78	13.06	0.91	5.55	0.12	8	73.9	0.4
16	16.76	21.10	22.91	17.13	0.91	5.63	0.12	12	102	0.5

Note : Fitting shape can be as the dashed line.

Table 2 NS- Fittings
Size 20" ~ 40"



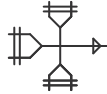
NS



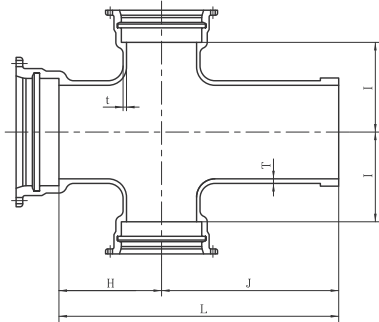
Size (inches)	Outside Diameter (inches)	Dimensions (inches)							No. of Bolt	Mass (lb)	
		D2	D3	D4	D5	E	P	V		X	Socket
20	20.79	21.42	25.75	27.56	0.91	5.94	0.16	2.36	14	190	6.3
24	24.83	25.54	29.84	31.65	0.91	5.94	0.16	2.36	14	231	7.5
28	28.86	29.65	34.49	36.61	1.06	7.36	0.24	3.15	16	346	17.6
32	32.91	33.70	38.78	40.91	1.06	7.68	0.24	3.15	20	421	20.0
36	36.97	37.76	43.23	45.83	1.30	7.68	0.24	3.15	20	505	22.5
40	40.98	41.77	47.52	50.12	1.30	7.95	0.24	3.15	20	595	24.7

Note : Fitting shape can be as the dashed line.

Table 3 Triple Socket Crosses

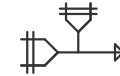


Size 20" ~ 36"

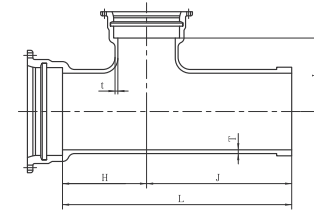


Size (inches)		Thickness (inches)		Dimensions (inches)				Mass (lb)
D	d	T	t	H	I	J	L	
20	16	0.59	0.55	18.90	18.11	33.46	52.36	981
24	16	0.63	0.55	21.65	20.87	36.22	57.87	1237
28	20	0.67	0.59	24.41	23.62	38.58	62.99	1814
32	24	0.71	0.63	27.17	26.38	40.55	67.72	2293
36	28	0.75	0.67	30.31	29.53	42.91	73.23	3020

Table 4 Double Socket Tees



Size 20" ~ 40"

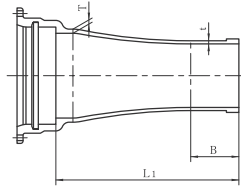


Size (inches)		Thickness (inches)		Dimensions (inches)				Mass (lb)
D	d	T	t	H	I	J	L	
20	16	0.59	0.55	18.90	18.11	33.46	52.36	842
20	20	0.59	0.59	18.90	18.11	33.46	52.36	946
24	16	0.63	0.55	21.65	20.87	36.22	57.87	1096
24	20	0.63	0.59	21.65	20.87	36.22	57.87	1197
24	24	0.63	0.63	21.65	20.87	36.22	57.87	1254
28	20	0.67	0.59	24.41	23.62	38.58	62.99	1572
28	24	0.67	0.63	24.41	23.62	38.58	62.99	1627
28	28	0.67	0.67	24.41	23.62	38.58	62.99	1761
32	20	0.71	0.59	27.17	26.38	40.55	67.72	1940
32	24	0.71	0.63	27.17	26.38	40.55	67.72	1995
32	28	0.71	0.67	27.17	26.38	40.55	67.72	2127
32	32	0.71	0.71	27.17	26.38	40.55	67.72	2227
36	24	0.75	0.63	23.62	27.17	37.01	60.63	2136
36	28	0.75	0.67	30.31	29.53	42.91	73.23	2579
36	32	0.75	0.71	30.31	29.53	42.91	73.23	2668
36	36	0.75	0.75	30.31	29.53	42.91	73.23	2778
40	24	0.79	0.63	26.77	30.31	38.98	65.75	2601
40	32	0.79	0.71	33.07	32.28	44.88	77.95	3153
40	36	0.79	0.79	33.07	32.28	44.88	77.95	3395

Table 5 Socket Spigot Reducers



Size 20" ~ 40"

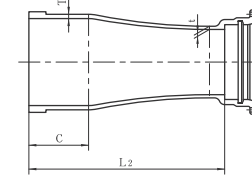


Size (inches)		Thickness (inches)		Dimensions (inches)		Mass (lb)
D	d	T	t	B	L ₁	
20	12	0.59	0.49	7.87	31.89	408
20	16	0.59	0.55	8.66	32.68	456
24	12	0.63	0.49	7.87	32.28	494
24	16	0.63	0.55	8.66	33.07	542
24	20	0.63	0.59	9.06	33.46	597
28	16	0.67	0.55	8.66	41.34	783
28	20	0.67	0.59	9.06	41.73	849
28	24	0.67	0.63	9.06	41.73	917
32	20	0.71	0.59	9.06	42.13	992
32	24	0.71	0.63	9.06	42.13	1056
32	28	0.71	0.67	9.45	42.52	1144
36	20	0.75	0.59	9.06	42.52	1160
36	24	0.75	0.63	9.06	42.52	1219
36	28	0.75	0.67	9.45	42.91	1301
36	32	0.75	0.71	9.45	42.91	1380
40	24	0.79	0.63	9.06	43.31	1413
40	28	0.79	0.67	9.45	43.70	1490
40	32	0.79	0.71	9.45	43.70	1563
40	36	0.79	0.75	10.24	44.49	1664

Table 6 Spigot Socket Reducers



Size 20" ~ 40"



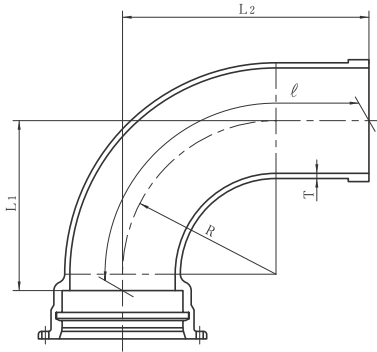
Size (inches)		Thickness (inches)		Dimensions (inches)		Mass (lb)
D	d	T	t	C	L ₂	
20	12	0.59	0.49	9.06	31.89	320
20	16	0.59	0.55	9.06	32.28	384
24	12	0.63	0.49	9.06	31.89	375
24	16	0.63	0.55	9.06	32.28	434
24	20	0.63	0.59	9.06	33.07	564
28	16	0.67	0.55	9.45	40.55	584
28	20	0.67	0.59	9.45	41.34	725
28	24	0.67	0.63	9.45	41.73	827
32	20	0.71	0.59	9.45	41.34	802
32	24	0.71	0.63	9.45	41.73	899
32	28	0.71	0.67	9.45	42.13	1078
36	20	0.75	0.59	10.24	42.13	910
36	24	0.75	0.63	10.24	42.52	1001
36	28	0.75	0.67	10.24	42.91	1175
36	32	0.75	0.71	10.24	43.31	1321
40	24	0.79	0.63	10.24	42.52	1105
40	28	0.79	0.67	10.24	42.91	1272
40	32	0.79	0.71	10.24	43.31	1411
40	36	0.79	0.75	10.24	43.70	1572

NS

Table 7 Socket Spigot Bends 90°



Size 20" ~ 40"

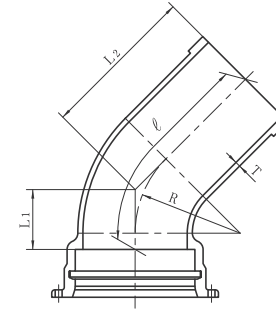


Size (inches)	Thickness (inches)	Dimensions (inches)			Length of Pipe center (inches)	Mass (lb)
		R	L ₁	L ₂		
20	0.59	19.09	21.85	31.69	45.35	635
24	0.63	22.83	25.79	35.43	51.42	875
28	0.67	26.77	29.92	41.34	59.76	1279
32	0.71	30.51	33.66	45.67	66.22	1667
36	0.75	34.25	37.60	55.31	78.23	2249
40	0.79	37.99	41.34	59.65	84.68	2800

Table 8 Socket Spigot Bends 45°



Size 20" ~ 40"

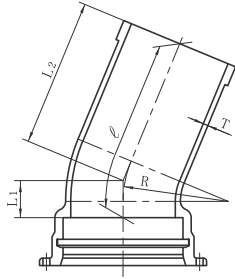


Size (inches)	Thickness (inches)	Dimensions (inches)			Length of Pipe center (inches)	Mass (lb)
		R	L ₁	L ₂		
20	0.59	19.09	10.83	20.47	30.47	492
24	0.63	22.83	12.40	22.05	33.46	653
28	0.67	26.77	14.37	25.79	39.02	961
32	0.71	30.51	15.75	27.76	42.20	1224
36	0.75	34.25	17.52	35.24	51.30	1656
40	0.79	37.99	19.09	37.40	54.84	2028

Table 9 Socket Spigot Bends 22 1/2°



Size 20" ~ 40"

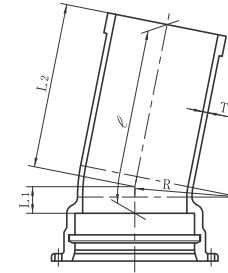


Size (inches)	Thickness (inches)	Dimensions (inches)			Length of Pipe center (inches)	Mass (lb)
		R	L ₁	L ₂		
20	0.59	19.09	6.69	24.21	30.83	494
24	0.63	22.83	7.48	24.61	31.97	635
28	0.67	26.77	8.46	29.53	37.87	944
32	0.71	30.51	9.25	32.28	41.38	1208
36	0.75	34.25	10.04	38.39	48.27	1587
40	0.79	37.99	10.83	40.94	51.57	1944

Table 10 Socket Spigot Bends 11 1/4°



Size 20" ~ 40"

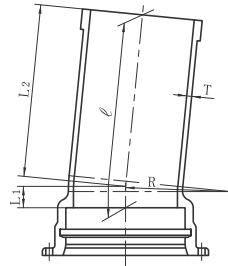


Size (inches)	Thickness (inches)	Dimensions (inches)			Length of Pipe center (inches)	Mass (lb)
		R	L ₁	L ₂		
20	0.59	19.09	6.69	24.21	30.91	496
24	0.63	22.83	7.48	24.41	31.89	633
28	0.67	26.77	8.46	29.33	37.80	941
32	0.71	30.51	9.25	32.28	41.54	1210
36	0.75	34.25	10.04	38.19	48.19	1587
40	0.79	37.99	10.83	40.75	51.54	1944

Table 11 Socket Spigot Bends 5 5/8°



Size 20" ~ 40"



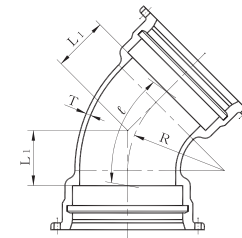
Size (inches)	Thickness (inches)	Dimensions (inches)			Length of Pipe center (inches)	Mass (lb)
		D	L ₁	L ₂		
20	0.59	19.09	6.69	24.21	30.91	496
24	0.63	22.83	7.48	24.41	31.89	633
28	0.67	26.77	8.46	29.33	37.80	941
32	0.71	30.51	9.25	32.28	41.54	1210
36	0.75	34.25	10.04	38.19	48.19	1587
40	0.79	37.99	10.83	40.75	51.57	1944

Table 12 NS-Double Socket Bends 45°



NS

Size 20" ~ 40"

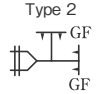


Size (inches)	Thickness (inches)	Dimensions (inches)		Length of Pipe center (inches)	Mass (lb)
		D	L ₁		
20	0.59	19.09	10.83	20.83	582
24	0.63	22.83	12.4	23.82	758
28	0.67	26.77	14.37	27.6	1116
32	0.71	30.51	15.75	30.2	1402
36	0.75	34.25	17.52	33.58	1748
40	0.79	37.99	19.09	36.54	2130

Table 13 NS-Double Socket Bends 22 1/2°



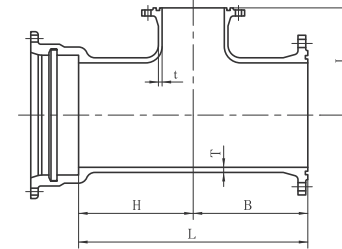
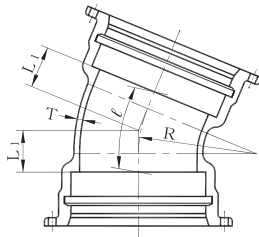
Table 14
NS- Socket Flanged Tees with Flanged Branch
(For use in Gate Valve Chamber)



NS

Size 20" ~ 40"

Size 20" ~ 40"



Size (inches)	Thickness (inches)	Dimensions (inches)		Length of Pipe center (inches)	Mass (lb)
		R	L ₁		
20	0.59	19.09	6.69	13.31	509
24	0.63	22.83	7.48	14.84	646
28	0.67	26.77	8.46	16.81	950
32	0.71	30.51	9.25	18.35	1182
36	0.75	34.25	10.04	19.92	1446
40	0.79	37.99	10.83	21.46	1742

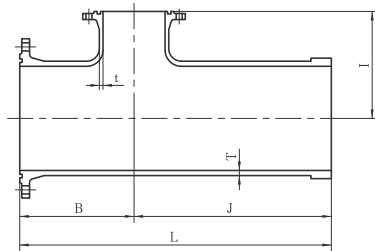
Size (inches)	Thickness (inches)	Dimensions (inches)						Mass (lb)			
		D	d	T	t	B	H	I	L	105 psi	145 psi
20	4	0.59	0.39	9.84	9.84	14.17	19.69	463	450	516	536
24	4	0.63	0.43	11.02	11.02	17.32	22.05	604	600	681	708
28	6	0.67	0.47	12.20	12.20	19.29	24.41	849	853	959	1060
32	6	0.71	0.51	12.99	12.99	21.65	25.98	1069	1069	1217	1398
36	8	0.75	0.55	14.57	14.57	24.02	29.13	1360	1347	1521	1744
40	8	0.79	0.59	15.75	15.75	26.38	31.50	1653	1647	1889	—

Note : Detail of flange will conform to JIS G 5527
[105 psi (7.5K) to 290 psi (20K) or AWWA Flange
Upon request.

Table 15
NS- Flanged Spigot Tees with Flanged Branch
(For use in Gate Valve Chamber)



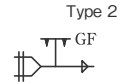
Size 20" ~ 40"



Size (inches)		Thickness (inches)		Dimensions (inches)				Mass (lb)			
D	d	T	t	B	I	J	L	105 psi	145 psi	230 psi	290 psi
20	4	0.59	0.39	9.84	14.17	22.05	31.89	397	386	450	470
24	4	0.63	0.43	11.02	17.32	23.62	34.65	536	531	613	639
28	6	0.67	0.47	12.20	19.29	24.41	36.61	708	710	818	917
32	6	0.71	0.51	12.99	21.65	24.80	37.80	886	888	1034	1215
36	8	0.75	0.55	14.57	24.02	26.38	40.94	1138	1124	1299	1521
40	8	0.79	0.59	15.75	26.38	27.56	43.31	1384	1380	1623	—

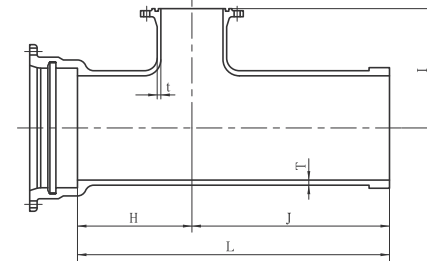
Note : Detail of flange will conform to JIS G 5527
(105 psi (7.5K) to 290 psi (20K) or AWWA Flange
Upon request.

Table 16
NS- Socket Spigot Tees with Flanged Branch
(For Air Valves, Fire Hydrants and Manholes)



NS

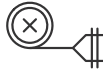
Size 20" ~ 40"



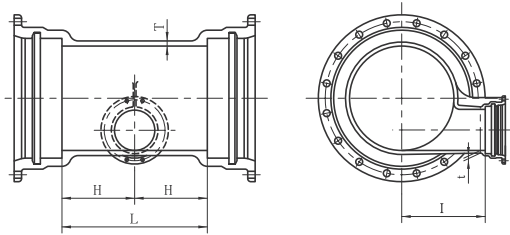
Size (inches)		Thickness (inches)		Dimensions (inches)				Mass (lb)			
D	d	T	t	H	I	J	L	105 psi	145 psi	230 psi	290 psi
20	3	0.59	0.39	9.06	14.17	22.05	31.10	509	505	507	507
20	4	0.59	0.39	9.06	15.75	22.05	31.10	514	509	512	512
24	3	0.63	0.43	9.45	16.14	22.44	31.89	646	642	644	644
24	4	0.63	0.43	9.45	17.72	22.44	31.89	650	646	648	648
28	3	0.67	0.47	10.24	18.90	22.83	33.07	882	880	882	882
28	4	0.67	0.47	10.24	18.90	22.83	33.07	884	882	884	884
32	3	0.71	0.51	10.63	20.47	23.23	33.86	1080	1078	1078	1080
32	4	0.71	0.51	10.63	20.47	23.23	33.86	1083	1078	1083	1083
32	24	0.71	0.63	27.17	26.38	40.55	67.72	1847	1847	1927	1951
36	4	0.75	0.55	11.81	23.23	24.41	36.22	1340	1336	1338	1340
36	24	0.75	0.63	23.62	27.17	37.01	60.63	1991	1991	2070	2094
40	6	0.79	0.59	12.60	25.20	25.20	37.80	1614	1612	1616	1618
40	24	0.79	0.63	26.77	30.31	38.98	65.75	2447	2447	2535	2557

Note : Detail of flange will conform to JIS G 5527
(105 psi (7.5K) to 290 psi (20K) or AWWA Flange
Upon request.

Table 17
Double Socket Level Invert Tees
with Socket Branch



Size 20" ~ 40"



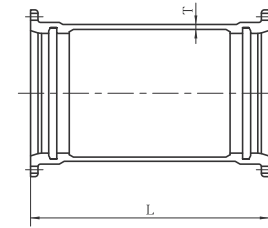
Size (inches)		Thickness (inches)		Dimensions (inches)			Mass (lb)
D	d *	T	t	H	I	L	
20	8	0.59	0.51	11.02	13.78	22.05	657
24	8	0.63	0.51	11.42	15.75	22.83	811
28	12	0.67	0.59	13.78	17.72	27.56	1213
32	12	0.71	0.59	14.17	19.69	28.35	1470
36	12	0.75	0.59	14.57	21.65	29.13	1759
40	16	0.79	0.63	17.32	23.62	34.65	2227

* d : 8"-12" : GX-type joint
16" : NS-type joint

Table 18 NS- Collars



Size 20" ~ 40"



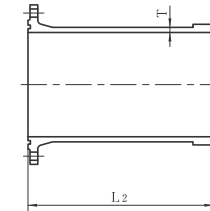
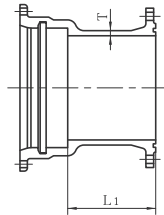
Size (inches)	Thickness (inches)	Dimension (inches)	Mass (lb)
D	T	L	
20	0.67	25.59	467
24	0.71	25.59	575
28	0.75	31.50	849
32	0.83	31.50	1052
36	0.87	31.50	1252
40	0.91	31.50	1459

Table 19 NS- Flanged Socket 

Table 20 NS- Flanged Spigot 

Size 20" ~ 40"

Size 20" ~ 40"



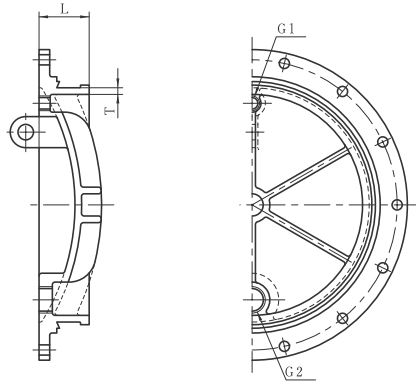
Size (inches)	Thickness (inches)	Nominal laying length (inches)	Mass (lb)			
			D	T	L ₁	105 psi
20	0.59	6.69	324	315	377	397
24	0.63	9.84	437	439	516	542
28	0.67	9.84	604	611	712	809
32	0.71	9.84	747	750	893	1071
36	0.75	9.84	906	895	1063	1283
40	0.79	9.84	1065	1063	1299	—

Size (inches)	Thickness (inches)	Nominal laying length (inches)	Mass (lb)			
			D	T	L ₂	105 psi
20	0.59	29.53	362	353	415	434
24	0.63	29.53	456	456	536	560
28	0.67	29.53	578	582	683	783
32	0.71	29.53	710	714	855	1034
36	0.75	31.50	902	891	1056	1276
40	0.79	31.50	1049	1047	1283	—

Note : Detail of flange will conform to JIS G 5527
[105 psi (7.5K) to 290 psi (20K) or AWWA Flange
Upon request.

Note : Detail of flange will conform to JIS G 5527
[105 psi (7.5K) to 290 psi (20K) or AWWA Flange
Upon request.

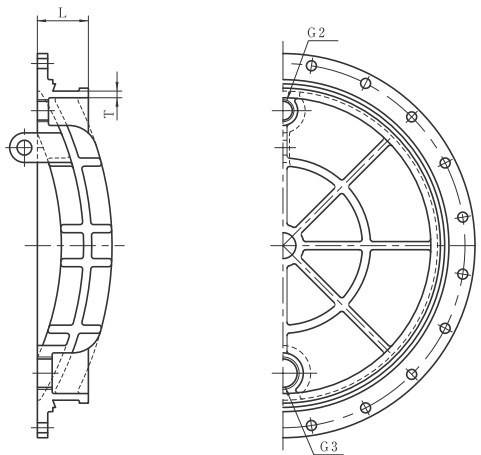
Size 20"



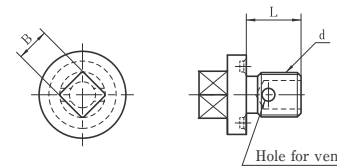
Size (inches)	Thickness (inches)	Dimension (inches)	Mass (lb)
D	T	L	
20	0.59	4.65	195
24	0.63	4.69	287
28	0.67	5.39	412
32	0.71	5.63	613
36	0.75	5.67	814
40	0.79	5.79	1043

- Note 1.** PFA (Allowable operating pressure) : 105 psi
2. Screw size of tapped holes will conform to parallel thread of JIS B 0202.

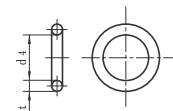
Size 24" ~ 40"



Bolts for vent and drain
(SUS304)



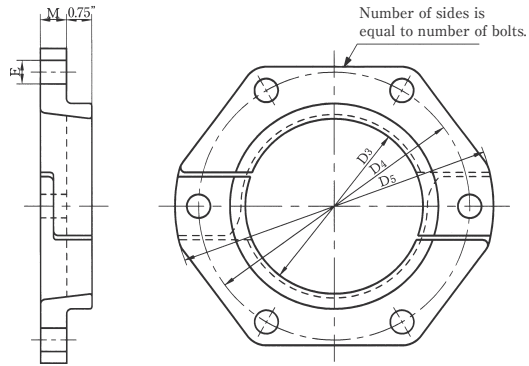
Seal ring
(SBR I A · 70)



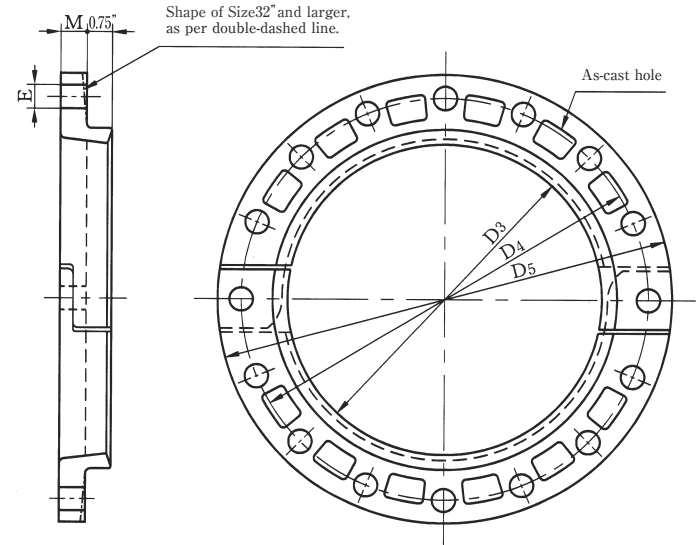
Size	Bolts for vent and drain		Seal ring	
	Dimensions (inches)		Dimensions (inches)	
d	B	L	t	d ₄
G 1	0.87	1.06	0.20	1.38
G 2	0.98	1.18	0.22	2.36
G 3	1.14	1.57	0.22	3.54

Table 22 NS-Jointing Accessories (1)
Gland

For Fittings (Size 12" ~ 16")



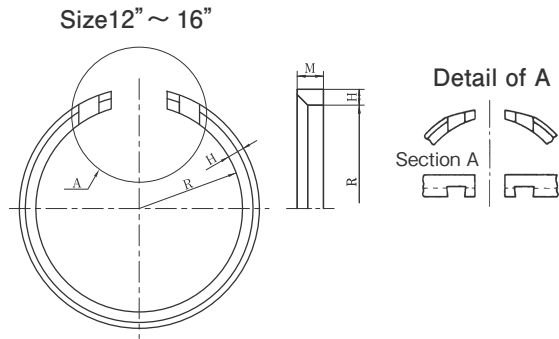
For pipes and Fittings (Size 20" ~ 40")



Size (inches)	Dimensions (inches)					No. of Bolt	Mass (lb) (1 set)
	D ₃	D ₄	D ₅	E	M		
12	12.87	16.97	18.78	0.91	0.79	8	28.4
16	16.91	21.10	22.91	0.91	0.87	12	41.7
20	20.94	25.75	27.56	0.91	0.94	14	46.7
24	24.99	29.84	31.65	0.91	0.98	14	57.8
28	29.06	34.49	36.61	1.06	1.02	16	77.8
32	33.11	38.78	40.91	1.06	1.10	20	93.3
36	37.17	43.23	45.83	1.30	1.14	20	117.7
40	41.22	47.52	50.12	1.30	1.18	20	138

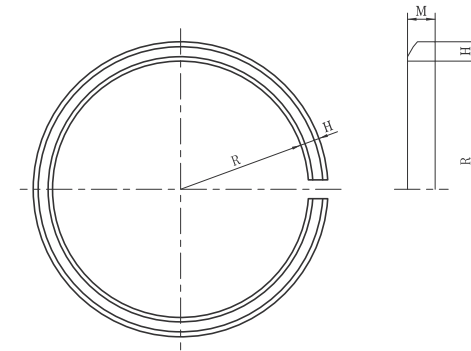
NS

Table 23 NS-Jointing Accessories (2)
Lock Ring



Size (inches)	Dimensions (inches)			Mass (lb)
	H	M	R	
12	0.43	0.79	6.31	3.0
16	0.43	0.79	8.34	3.9

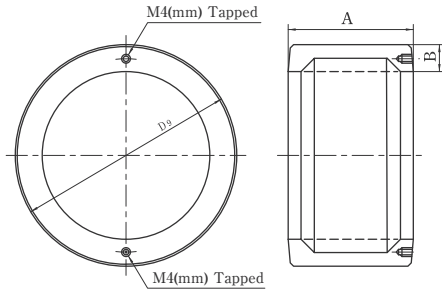
Size 20" ~ 40"



Size (inches)	Dimensions (inches)			Mass (lb)
	H	M	R	
20	0.69	0.98	10.31	9.9
24	0.69	0.98	12.20	11.9
28	0.77	1.20	14.17	19.6
32	0.81	1.20	16.18	23.1
36	0.85	1.20	18.15	26.9
40	0.93	1.20	20.12	37.9

Table 24 NS-Jointing Accessories (3)
Liner

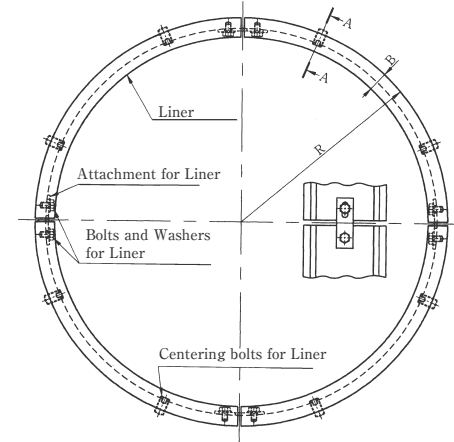
Size12" ~ 16"



Size (inches)	Dimensions (inches)			Mass (lb)
	D ₉	A	B	
12	12.75	4.80	0.79	21.3
16	16.80	4.88	0.87	33.1

Note : Shape of Size12" · Size16" can be as the dashed line.

Size20" ~ 40"

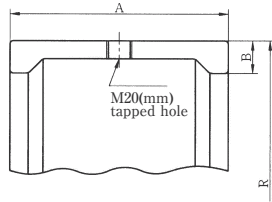


Size (inches)	Dimensions (inches)			Mass (lb) (1 set)	Attachment for Liner	Bolts for Liner	Centering bolts for Liner	
	A	B	R				Dimensions (inches) L	No
	No	No	No					
20	5.63	1.06	10.75	69.0	2	4	1.26	4
24	5.63	1.06	12.74	84.9	3	6	1.26	6
28	5.71	1.14	14.72	106.7	3	6	1.61	6
32	5.71	1.22	16.79	130.1	4	8	1.61	8
36	5.71	1.22	18.78	149.9	4	8	1.73	8
40	5.75	1.22	20.79	172.2	4	8	1.73	8

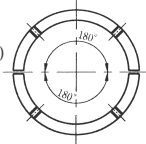
Table 25 NS-Jointing Accessories (4)
Spigot Ring for Cut Pipe [Rivet Type]
Size 12" · 16"

NS

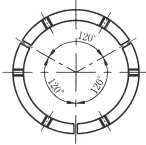
Section A-A



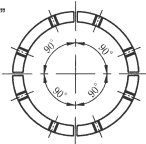
Size 20"
(Dual partitioning)



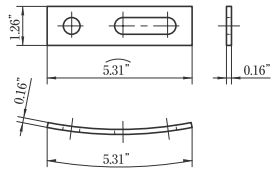
Size 24" · 28"
(trifurcation)



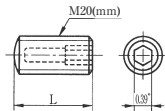
Size 32" ~ 40"
(quarter)



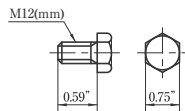
Attachments for Liner
(SUS304)



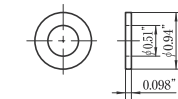
Centering Bolts for Liner
(PA6)



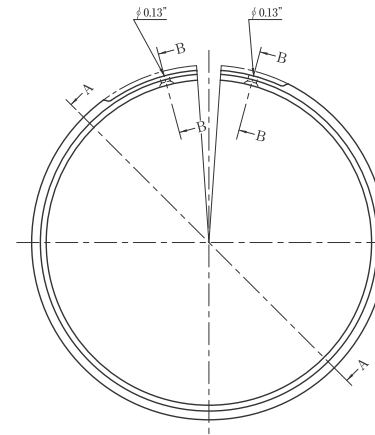
Bolts for Liner



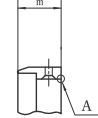
Washers for Liner



Section A-A



Section B-B



Detail of A
(In case of Size 3)

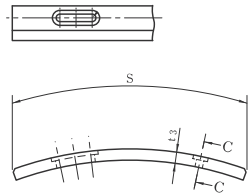


Size (inches)	Spigot Ring Dimensions (inches)			Connected piece for Spigot Ring Dimensions (inches)			Mass (lb (1 set)
	D ₁	m	t ₁	m ₁	S	t ₃	
12	12.15	0.76	0.20	0.61	3.62	0.08	1.0
16	16.06	0.76	0.20	0.61	3.98	0.08	1.3

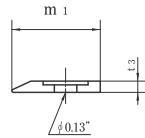
- Note 1.** Connected piece will be coated with fusion-bonded epoxy not less than 0.39oz/ft² in accordance with JIS G 5528 or JWWA G 112.
Note 2. Rivet will be of SUS304, SUS305 or SUSXM7.

- Note 1.** Bolts for Liner will be of SUS304, SUS304J3 or SUSXM7.
Note 2. Washer for Liner will be of SUS304.

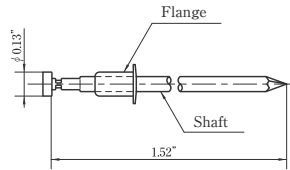
Connection Piece for Spigot Ring
(SUS304)



Section C-C

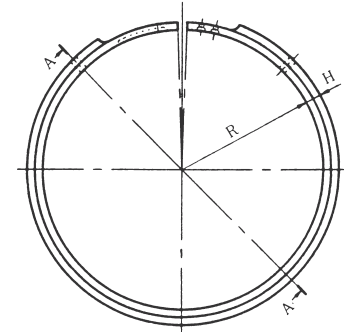


Rivet



Size 20" ~ 40"

Spigot Ring

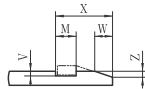


Section A-A



In case of forming spigot projections by using spigot ring for cut pipe, Class 1 Pipes (D1) for Size3" to Size10" and Class 1 Pipes (D1) or Class PF Pipes (DPF) for Size12" to Size18" will be used, and forming groove of spigot.

Spigot of Cutting Pipes



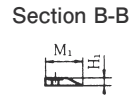
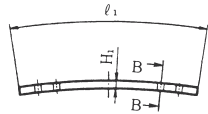
Dimension and Tolerance

Size (inches)	M	V	W	X	Z
12 · 16	0.43	$\begin{matrix} +0.059 \\ 0 \end{matrix}$	$\begin{matrix} 0 \\ -0.020 \end{matrix}$	$\begin{matrix} 0.55 \\ -0.079 \end{matrix}$	$\begin{matrix} 1.39 \\ +0.079 \\ 0 \end{matrix}$

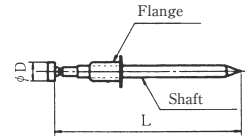
Size (inches)	Spigot Ring			Connected piece for Spigot Ring			Mass (lb) (1 set)	Rivet	
	Dimensions (inches)			Dimensions (inches)				D	L
	H	M	R	H ₁	ℓ ₁	M ₁			
20	0.28	0.79	10.20	0.12	4.37	0.75	3.4	0.13	1.52
24	0.28	0.79	12.20	0.12	4.37	0.75	4.0	0.13	1.52
28	0.39	0.98	14.17	0.20	4.49	0.94	8.0	0.16	1.57
32	0.39	0.98	16.18	0.20	4.49	0.94	9.2	0.16	1.57
36	0.39	0.98	18.23	0.20	4.49	0.94	10.3	0.16	1.57
40	0.43	1.18	20.20	0.20	4.49	1.14	15.0	0.16	1.57

Note : Rivet will be of SUS304, SUS305 or SUSXM7.

Connection piece for Spigot Ring

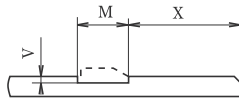


Rivet



Note In case of forming spigot projections by using spigot ring for cut pipe, Class S (DS) Pipes, Class 1 (D1) Pipes or Class PF (DPF) Pipes will be used, and forming groove of spigot.

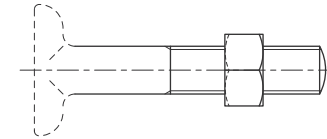
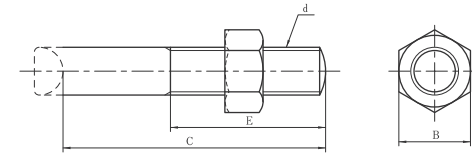
Spigot of Cutting Pipes



Dimension and Tolerance

Size (inches)	M		V		X	
20~24	0.87		0.12		1.57	±0.079
28~36	1.06	+0.059 -0.020	0.16	+0.039 -0.020	2.17	±0.160
40	1.26		0.20		1.97	

Table 26 NS-Jointing Accessories (5)
T-head Bolts and Nuts

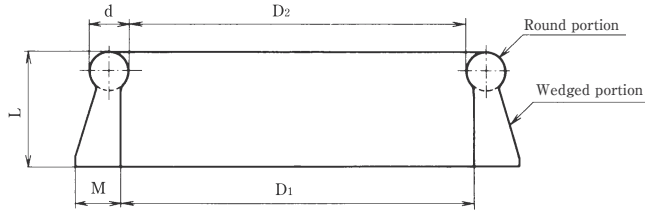


Size (inches)	d (mm)	B (inches)	C (inches)	E (inches)	No
12	M20	1.18	3.94	2.56	8
16	M20	1.18	4.33	2.56	12
20	M20	1.18	4.92	3.15	14
24	M20	1.18	4.92	3.15	14
28	M24	1.42	5.71	3.94	16
32	M24	1.42	5.71	3.94	20
36	M30	1.81	6.10	4.33	20
40	M30	1.81	6.10	4.33	20

Note : Shape of T-head Bolts is unregulated.

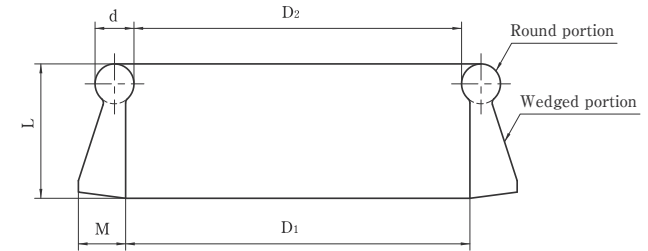
Table 27 NS-Jointing Accessories (6)
Rubber Gaskets

For Fittings (Size 12" ~ 16")



Size (inches)	D_1	D_2	d	L	M
12	12.44	12.20	0.71	1.85	0.83
16	16.38	16.14	0.71	1.85	0.83

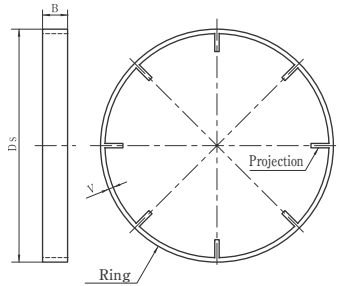
For pipes and Fittings (Size 20" ~ 40")



Size (inches)	D_1	D_2	d	L	M
20	20.39	20.16	0.63	2.13	0.67
24	24.41	24.17	0.63	2.13	0.67
28	28.27	27.95	0.83	2.60	0.83
32	32.20	31.85	0.91	2.83	0.91
36	36.14	35.79	0.91	2.83	0.91
40	40.08	39.69	0.94	2.91	0.94

Table 28 NS-Jointing Accessories (7)
Lock Ring Centering Rubbers

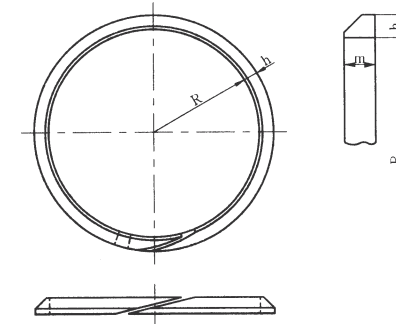
For Fittings (Size12" ~ 16")



Size (inches)	For Pipes (DN3"~DN18") and For Fittings (DN3"~DN10")				For Fittings (DN12"~DN18")			
	D _s	B	V	No. of Projection	D _s	B	V	No. of Projection
12	14.27	0.83	0.12	14	14.43	0.83	0.08	8
16	18.35	0.83	0.12	18	18.47	0.83	0.08	10

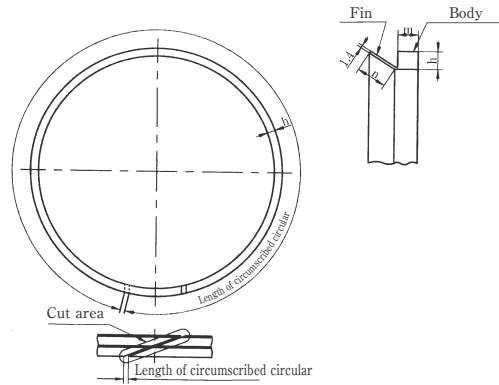
Table 29 NS-Jointing Accessories (8)
Backup Rings
(PA6)

For Fittings (Size12" ~ 16")



Size (inches)	Dimensions (inches)		
	R	h	m
12	6.36	0.43	0.51
16	8.39	0.43	0.51

For pipes and Fittings (Size 20" ~ 40")



Size (inches)	Dimensions (inches)			
	L	h	m	n
20	67	0.24	0.35	0.43
24	79	0.24	0.35	0.43
28	93	0.31	0.35	0.53
32	105	0.31	0.35	0.53
36	118	0.31	0.35	0.53
40	131	0.31	0.35	0.53

- Note 1.** Circumferential shape of fin can be waved.
2. Cut area can be irregularity.